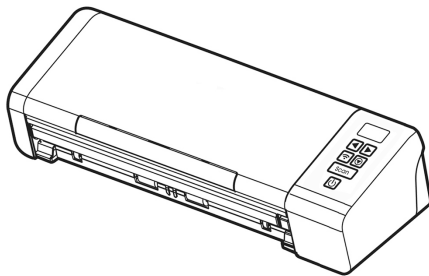


Avision



MOBILE SCANNER USER'S MANUAL

Regulatory Model Number: FL-1912H

www.acion.com

Trademarks

Mac, and Mac OS are trademarks of Apple Computer, Inc., registered in the United States.

Microsoft is a U.S. registered trademark of Microsoft Corporation. Windows 7, Windows 8, and Windows 10 are either registered trademarks or trademarks of Microsoft Corporation in the United States and/or other countries.

Energy Star® is a registered trademark of the U.S. government. Other brands and product names herein are trademarks or registered trademarks of their respective holders.

Copyright

All rights reserved. No part of this publication may be reproduced, transmitted, transcribed, stored in a retrieval system, or translated into any language or computer language, in any form or by any means, electronic, mechanical, magnetic, optical, chemical, manual, or otherwise, without the prior written permission of Avison Inc.

Material scanned by this product may be protected by governmental laws and other regulations, such as copyright laws, the customer is solely responsible for complying with all such laws and regulations.

Warranty

The information contained in this document is subject to change without notice.

Avison makes no warranty of any kind with regard to this material, including, but not limited to, the implied warranties of fitness for a particular purpose.

Avison shall not be liable for errors contained herein or for incidental or consequential damages in connection with the furnishing, performance, or use of this material.

Federal Communications Commission (FCC) compliance information statement

Part 15

This equipment has been tested and found to comply with the limits for a Class B digital device, pursuant to Part 15 of the FCC Rules. These limits are designed to provide reasonable protection against harmful interference in a residential installation. This equipment generates, uses and can radiate radio frequency energy and, if not installed and used in accordance with the instructions, may cause harmful interference to radio communications.

However, there is no guarantee that interference will not occur in a particular installation. If this equipment does cause harmful interference to radio or television reception, which can be determined by turning the equipment off and on, the user is encouraged to try to correct the interference by one of the following measures:

- Reorient or relocate the receiving antenna.
- Increase the separation between the equipment and receiver.
- Connect the equipment into an outlet on a circuit different from that to which the receiver is connected.
- Consult the dealer or an experienced radio/TV technician for help.

This device complies with Part 15 of the FCC Rules. Operation is subject to the following two conditions: (1) This device may not cause harmful interference, and (2) this device must accept any interference received, including interference that may cause undesired operation.

“Contains FCC ID: QUY-WM0006”



European Union Regulatory Notice

Products bearing the CE marking comply with the following EU Directives:

- Low Voltage Directive 2014/35/EC
- EMC Directive 2014/30/EC
- Restriction of the use of certain hazardous substances (RoHS) Directive 2011/65/EU
- RED (Radio Equipment Directive) (2014/53/EC)

CE compliance of this product is valid if powered with the correct CE-marked AC adapter provide by Avision.

This product satisfies the Class B limits of EN55032, EN55035, and safety requirements of EN62368-1.

*This machine is certified as Class 1 LED product.

Disposal of Waste Equipment by Users in Private Union



This symbol on the product or on its packaging indicates that the product can not be disposed of with your other household waste. Instead it should be sent to appropriate facilities for recovery and recycling in an effort to protect human health and the environment. For more information about where you can drop off your waste equipment for recycling, please contact your local city office, your household waste disposal service or the shop where you purchased the product.



As an ENERGY STAR® Partner, Avison Inc. has determined that this product meets the ENERGY STAR guidelines for energy efficiency.

System Requirements

Windows

- CPU: Intel® Core™ 2 Duo or higher
- Memory: 32 bit: 2 GB
64 bit: 4 GB
- Optical Drive: DVD-ROM Drive
- USB Port: Micro USB port
- Compatible Operating System: Microsoft Windows 7, Windows 8 (32 bits/64 bits), Windows 10 (32 bits/64 bits)

Mac OS

Operating System:

- Mac OS X 10.6 or later

Computer:

- Recommended: Intel® Core™ Duo Processor 2.4 GHz or higher
- Minimum: Intel® Core™ Duo Processor 1.83 GHz
PowerPC G5 1.6 GHz



Memory:

- Recommended: 1 GB or more
- Minimum: 512 MB

Product Safety Guide

Please clearly read all these instructions, and follow all instructions and warnings before installing and using the device.

The following indications are used in this document to obviate any chance of accident or damage to you and/or the device.

 WARNING	Indicates potentially hazardous situations, which if instructions are not followed, could result in death or serious injury.
 CAUTION	Indicates a potentially hazardous situation which, if instructions are not followed, may result in minor or moderate injury or damage to property.

WARNING

- Use only the AC power adapter that came with your device. Using any other AC power adapter could cause fire, electrical shock, or injury.
- Use only the AC power cord and USB cable that came with your device and avoid abrasions, cuts, fraying, crimping, and kinking. Using any other AC power cord and USB cable could cause fire, electrical shock, or injury.
- Do not place objects on top of the AC power cord, and do not allow the AC power adapter or the AC power cord to be stepped on or run over.
- Place the device and its AC power adapter near an electrical outlet where the AC power adapter can easily be unplugged.
- If you use an extension cord with the device, make sure that the total ampere rating of the devices plugged into the extension cord does not exceed the cord's ampere rating.
- Place the device close enough to the computer so that the interface cable can easily reach between the device and the computer.

-
- Do not place or store the device or its AC power adapter:
 - Outdoors
 - Near excessive dirt or dust, water, or heat sources
 - In locations subject to shocks, vibrations, high temperature or humidity, direct sunlight, strong light sources, or rapid changes in temperature or humidity
 - Do not use the device with wet hands.
 - Never disassemble, modify, or attempt to repair the AC power adapter, device, or device option by yourself, except as specifically explained in the device's documentation. This could cause fire, electrical shock, or injury.
 - Do not insert objects into any opening, as they may touch dangerous voltage points or short-out components. Beware of electrical shock hazards.
 - Unplug the device and the AC power adapter, and refer servicing to qualified service personnel under the following conditions:
 - The AC power adapter or plug is damaged.
 - Liquid has entered the device or the AC power adapter.
 - Object has entered the device or the AC power adapter.
 - The device or the AC power adapter has been dropped, or the case has been damaged.
 - The device or the AC power adapter does not operate normally (i.e. appearance of smoke, strange smell, odd noise, etc.), or exhibits a distinct change in performance
 - Unplug the device and the AC power adapter before cleaning.

 **CAUTION:**

- Do not locate the device on rickety or aslope tables. Do not locate the device on unstable surface. The device may fall down and this may result in injury.
- Do not place heavy objects on the unit. It may cause unbalance and the device may fall down. This may result in injury.
- Store the AC Power cord/USB cable bundled out of the reach of children to avoid the risk of injury.
- Keep plastic bags bundled out of the reach of children to avoid the danger of suffocation.
- If you are not going to use the device for a long period, unplug the AC power adapter from the electrical outlet.

FCC Caution:

Any changes or modifications not expressly approved by the party responsible for compliance could void the user's authority to operate this equipment.

This device is intended only for OEM integrators under the following conditions:

- 1) The antenna must be installed such that 20 cm is maintained between the antenna and users.
- 2) The transmitter module may not be co-located with any other transmitter or antenna.

IMPORTANT NOTICE:

FCC Radiation Exposure Statement:

This equipment complies with FCC radiation exposure limits set forth for an uncontrolled environment. This equipment should be installed and operated with minimum distance 20cm between the radiator & your body. To maintain compliance with FCC RF exposure compliance requirements, please avoid direct contact to the transmitting antenna during transmitting.

IC Notice:

Operation is subject to the following two conditions:

- 1) This device may not cause interference and
- 2) This device must accept any interference, including interference that may cause undesired operation of the device.

IMPORTANT NOTE:

IC Radiation Exposure Statement:

This equipment complies with IC radiation exposure limits set forth for an uncontrolled environment. End users must follow the specific operating instructions for satisfying RF exposure compliance. This equipment should be installed and operated with minimum distance 20cm between the radiator & your body.

This transmitter must not be co-located or operating in conjunction with any other antenna or transmitter.

Règlement d' Industrie Canada

Les conditions de fonctionnement sont sujettes à deux conditions:

- (1) Ce périphérique ne doit pas causer d'interférence et.
- (2) Ce périphérique doit accepter toute interférence, y compris les interférences pouvant perturber le bon fonctionnement de ce périphérique.

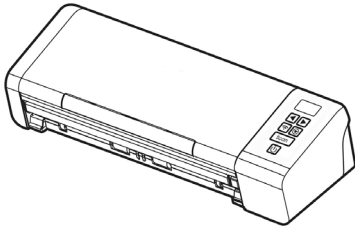
1. INTRODUCTION

Congratulations on your purchase of the color sheet-fed image scanner. With this scanner, you can scan documents from the auto document feeder to increase your productivity.

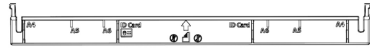
Before you install and operate the new scanner, please take a few minutes to read through this manual. It provides proper instructions for you to unpack, install, operate and maintain the scanner.

1.1 Package Items

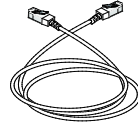
The following figure indicates the package contents. Please check all the items against your checklist. If you do not receive all the items, please contact your authorized local dealer immediately.



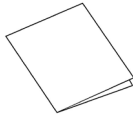
Scanner



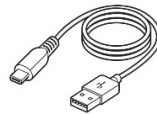
Rear Feeder



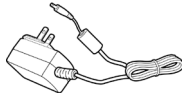
*Ethernet Cable



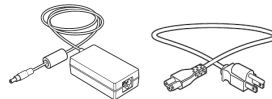
Quick Guide



USB Cable



Power Adapter (A)



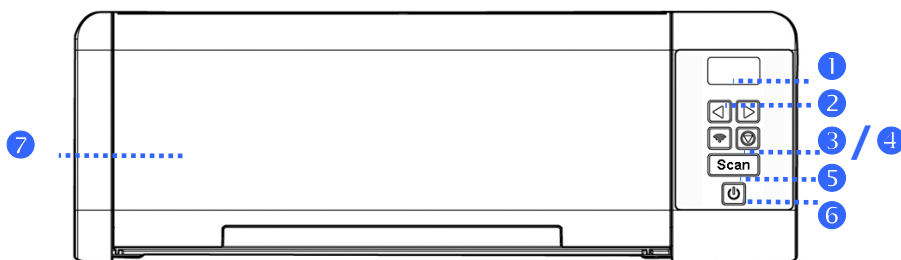
Or Power Adapter (B)



NOTE:

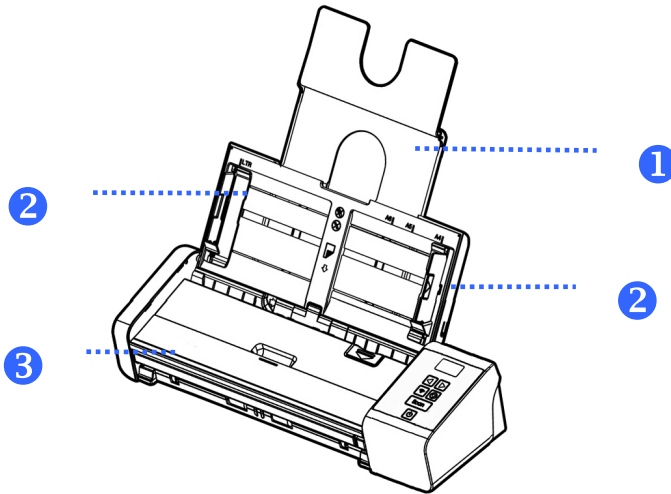


1. Only use the AC adapter ADS-65LSI-24-3 24048E (Honor)/DA-48M24, WA-36A24R (APD) included in the machine. Using other AC adapters may damage the machine and void the warranty.
2. Please unpack the packing carefully, and check the contents against the checklist. If any items are missing or damaged, please contact your dealer immediately.
3. * The availability varies according to your scanner model.
4. To access more service supports, visit www.avision.com to register your Avision's product.

1.2 Front View

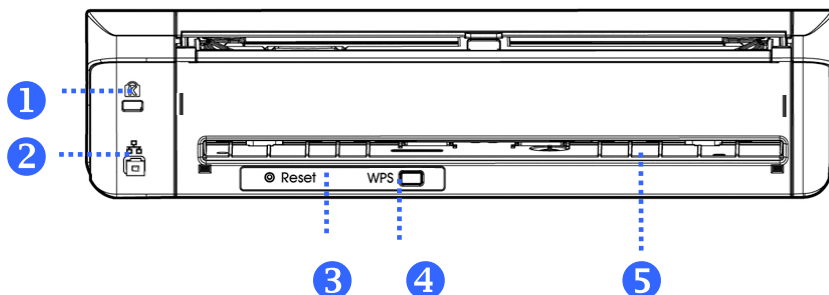


ITEM	NAME	DESCRIPTION
1	LCD Display	Displays the function button via the software application - Button Manager V2.
2	Right/Left Arrow	Used to scroll up and down to select your function button via the software application - Button Manager V2.
3	Wi-Fi button	<ul style="list-style-type: none"> ➤ Press 2 seconds to turn on or off the Wi-Fi/ethernet connection. ➤ Flash in blue to indicate Wi-Fi connection is ready.
4	Cancel 	Press to cancel a scanning job during operation.
5	Scan	Press to start a scan via the software application - Button Manager V2.
6	Power 	Press to turn on the power.
7	ADF Paper Tray	This tray is used for feeding documents. Open it when scanning documents.



ITEM	NAME	DESCRIPTION
1	Document Extension Plate	Open the plate to support the document when loading a long document.
2	Document Guides	These guides ensure documents are fed straight. Raise the guides when loading a document, and then align them to the edges of the document to be scanned.
3	Front Feed tray	This tray is used for feeding documents. Open it when scanning documents.

1.3 Rear View

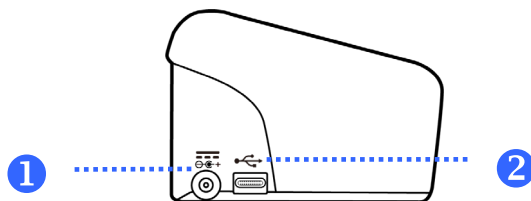


ITEM	NAME	DESCRIPTION
1	Kensington Security Slot	Attach to a lock to secure the scanner.
2	LAN Port	Used to connect to network with an ethernet cable.
3	Reset	Press to reset Wi-Fi login to factory default settings.
4	WPS Button	Press to use WPS (Wi-Fi Protected Setup) to connect to a wireless access point which supports WPS.
5	Rear Slot	Used to insert a rear feeder.

***Wired (Ethernet) and Wireless (Wi-Fi) Networks:**

The availability of these features varies according to your scanner model.

1.4 Side View



ITEM	NAME	DESCRIPTION
1	Power Jack	Connect the AC adapter to the scanner.
2	USB Type-C port	Used to plug the USB-C end of the USB cable to connect to your computer.

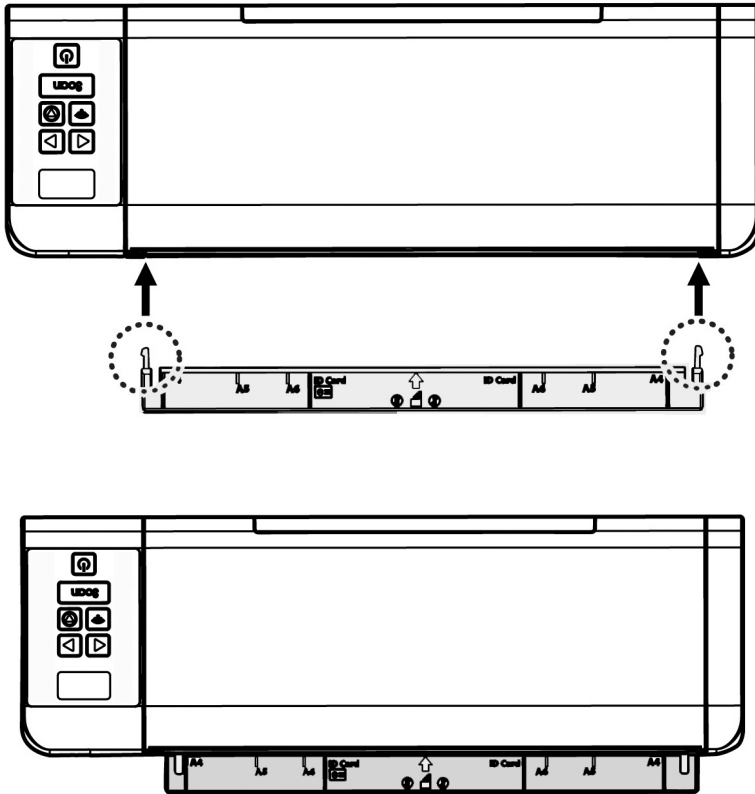
2. SCANNER INSTALLATION

2.1 Precautions

- Keep the scanner out of direct sunlight. Direct exposure to the sun or excessive heat may cause damage to the unit.
- Do not install the scanner in a humid or dusty place.
- Be sure to use the proper AC power source.
- Place the scanner securely on an even, flat surface. Tilted or uneven surfaces may cause mechanical or paper-feeding problems.
- Retain the scanner box and packing materials for shipping purposes.

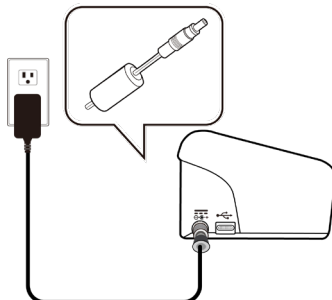
2.2 Installing the Rear Feed Tray

Attach the rear feed tray to the back slot of the scanner as indicated.



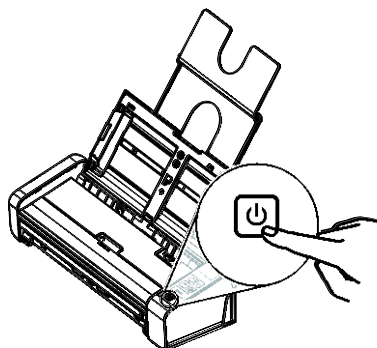
2.3 Connecting to Power

Plug the small end of the power adaptor into the power jack of your scanner. Insert the other end to an appropriate power outlet.



2.4 Turning on the Power

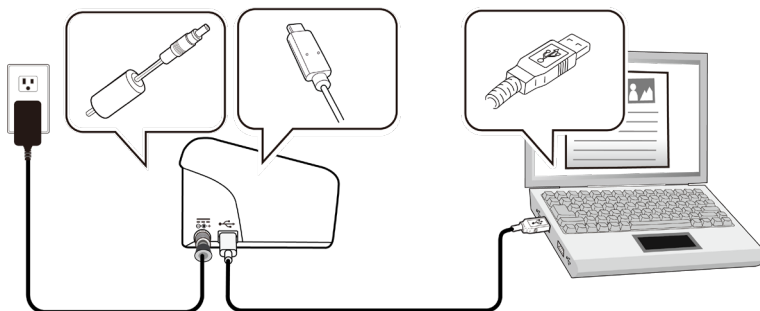
Press the **Power** Switch button on the front panel, the Power LED will flash. When it is finished and ready to scan, the LED indicator will stop flashing and become steadily on. To turn off the scanner, press the Power Switch button for about 3 seconds, the Power LED will be off.



2.5 Connecting to the Computer

2.5.1 Via A USB Port

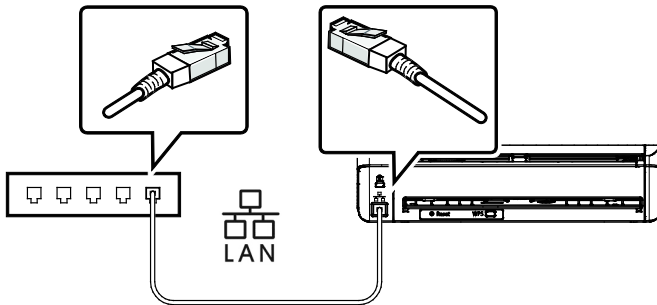
1. Connect the **square end** of the USB cable to the USB port of your scanner. Connect the **rectangle end** to the USB port at the rear side of your computer.



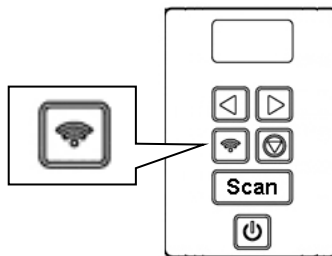
2. The computer should detect a new USB device and prompt a **"New Hardware Found"** message.
3. By following the on-screen instructions, click the **Next** button to continue. When the certification screen appears, click **Continue Anyway** to complete the installation.
4. When the **Finish** dialog is prompted, click the **Finish** button.

2.5.2 Via A Wired Network

1. Connect one end of the Ethernet cable to the LAN port at the back of the scanner. Connect the other end to an available port of your switching hub of your LAN.



2. Press the Wi-Fi button on the control panel to enable the Ethernet function. (The Wi-Fi button is designed to enable both the Wi-Fi and Ethernet function.)



2.6 Installing the Scanner Driver

Please note there are two methods to install the software. One is downloading [Avision Update] from <http://www.avision.com/install>. The other is manually installing from the provided CD. If your package contains a software CD, then please try manually installation from the CD.

Windows:

The scanner driver contains TWAIN, and WIA driver. After the installation of scanner driver is completed, this scanner allows you to scan via a TWAIN, or a WIA interface. Start your TWAIN-compliant image editing software application to select a TWAIN or WIA user interface. You may also launch Microsoft's Scanner and Camera Wizard to scan via a WIA user interface.

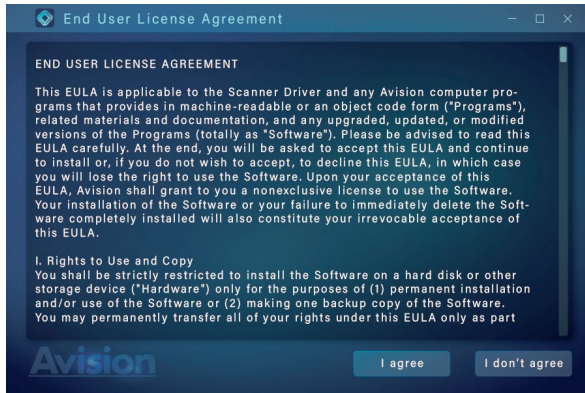
Mac OS:

The Avision color image scanner comes with the following scanning software applications to help you complete your scan and enhance your scanned image.

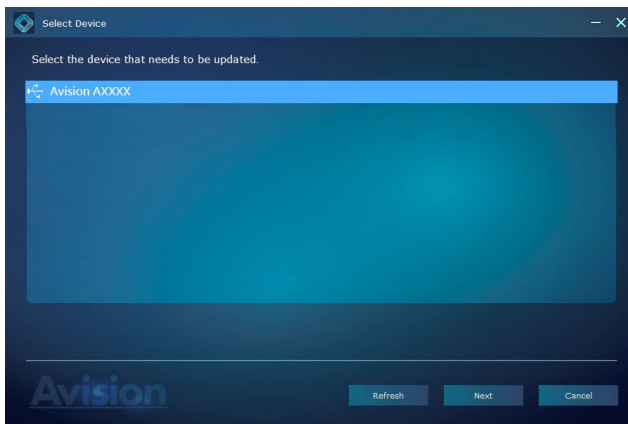
Avision TWAIN scanner driver
Avision ICA scanner driver
Avision Capture Tool software application

2.6.1 Downloading [Avision Update]

1. Download [**Avision Update**] at <http://www.avision.com/install>.
2. Run [**Avision Update.exe**].
3. The End User License Agreement screen will be prompted. Read the agreement and then choose [**I Agree**].



4. Click [**Next**] to continue.



5. The available software applications will be prompted. Select the applications to install. Click [**Install**] and follow the on-screen instructions to complete the installation.



*The list of available software applications varies according to your product type.

Contents on the installation graphic:

- **Driver:** To communicate with your scanner, you need to install the scanner driver.
- **Button Manager V2:** To use the buttons on the scanner, you need to install Button Manager V2.
- **AVScan X/PaperPort:** To scan and organize your multi-page document(s), you can install the software application to manage them easily and effectively.

Alternatively,
You may also download driver and manual at
www.avision.com/download.

2.6.2 Installing the Software from the CD

Windows:

1. Place the supplied CD-ROM onto your CD-ROM drive.
2. The software installation graphic appears. If not, run "setup.exe".



Contents on the installation graphic:

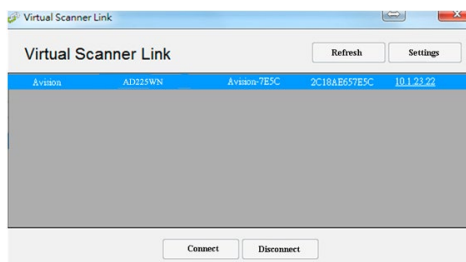
- **Install Scanner Driver:** To communicate with your scanner, you need to install the scanner driver.
- **Install Button Manager V2:** To use the buttons on the scanner, you need to install Button Manager V2. To ensure Button Manager V2 works properly, please FIRST install scanner driver before installing Button Manager V2.
- **Install AVScan X:** To scan and organize your multi-page document(s), you can install the software application to manage them easily and effectively.

-
- **View Manual:** Click "**View Manual**" to view or print the detailed user manual for the scanner and Button Manager V2 respectively.
3. Click **Install Scanner Driver** to install the scanner driver and then click **Install Button Manager V2** to install the Button Manager V2 onto your computer.

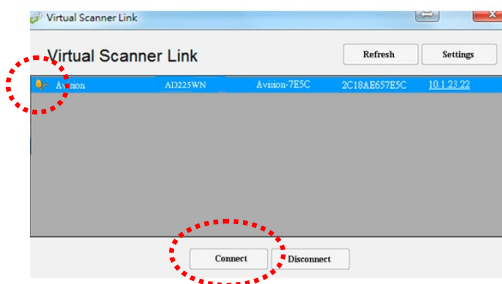
2.6.2.1 Connecting the Network Scanner

Before connecting to the network scanner, make sure that Virtual Scanner Link (Network Setup Tool) has been installed onto your computer. The Network Setup Tool is included in the supplied software CD.

1. Start [**Virtual Scanner Link**] by choosing **Start>All Programs>Avision Virtual Scanner>Virtual Scanner Link**. The main window will be displayed and the scanners in your network will be searched automatically. In a few seconds, the result including the scanner model and scanner's IP address will be displayed as shown.



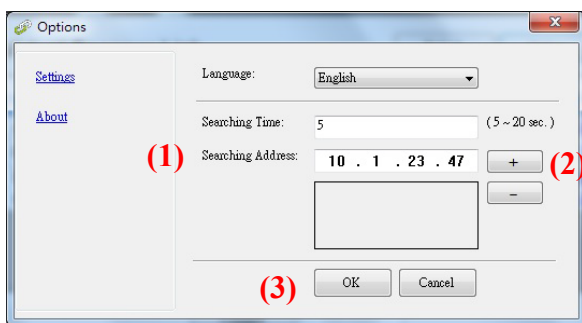
2. Choose the scanner you wish to connect and then press [**Connect**]. If connection is successful, a connection mark will be displayed as shown.



-
3. After the scanner has been connected successfully, launch your TWAIN-compliant image-editing software application to start a scan.
-

Note:

- The network scanner can be used by one user at a time. If the network scanner is being used by other user, you will be prompted with a message to connect the scanner later. When the scanner is available, you will also be prompted with a message to connect the scanner and start scanning your document.
- If the network scanner has not been found, it is probably the scanner and your computer are not in the same LAN. In this case, you can assign a specific IP address of the scanner to let [Virtual Scanner Link] automatically search the scanner. Click the [Option] button, type your IP address on the [Searching Address] field **(1)**, then click the [+] button **(2)** and finally click [OK] **(3)** to complete.



- Searching Time: When the program is launched, it automatically searches the scanner in the network in 5 seconds (default). The searching time can be changed from a range of 5 to 20 seconds.
 - If the [**Virtual Scanner Link**] program has been closed and then launched again, [**Virtual Scanner Link**] will automatically search and connect the network scanner it has previously connected to.
-

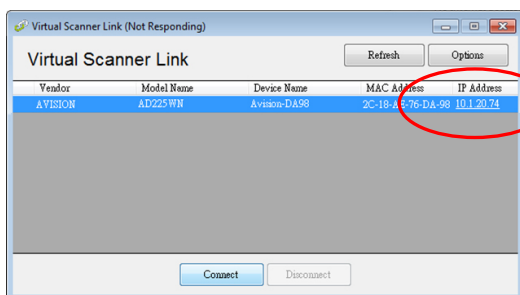
Important:

- Please note the Wi-Fi button on the scanner is not simply designed to enable the Wi-Fi mode but also enable the Ethernet function.
- The scanner can work at the same time in the ethernet mode, Wi-Fi client mode, or Wi-Fi AP (Access Point) mode.

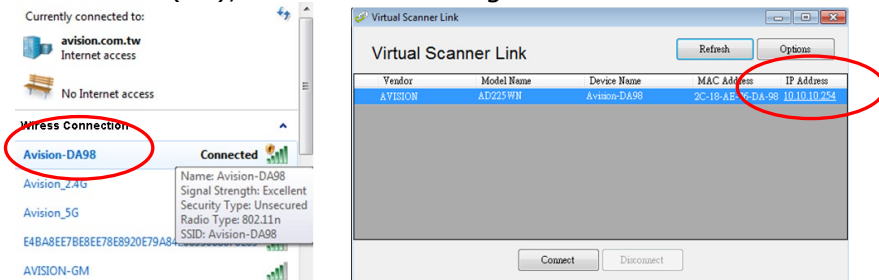
Your computer can connect the scanner in these three modes via VSL (Virtual Scanner Link).

1. Ethernet mode:

When you connect the network via the LAN cable and press the Wi-Fi button on the scanner, VSL will get the LAN IP: 10.1.20.74, as shown in the figure below.

**2. Wi-Fi AP mode:**

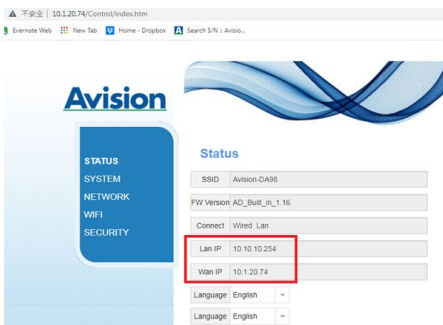
When your computer connects to the scanner in Wi-Fi AP mode, VLS will get its default IP: 10.10.10.254 from the scanner (AP), as shown in the figures below.



You can see the AD225CWN had two IP in the web page (Type the IP address of the scanner in the URL address of your browser)

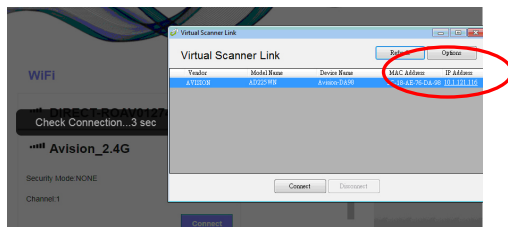
To avoid the confusion,

- The LAN IP is **actually** the permanent IP for our scanner in AP mode.
- The WAN IP is **in fact** provided by the network environment.





3. Wi-Fi client mode:

When your computer connects the scanner in Wi-Fi client mode, VSL will get the IP by the local Wi-Fi router.



And from the web page, the WAN IP is provided by the Local Wi-Fi router.



STATUS
SYSTEM
NETWORK
WIFI
SECURITY

Status

SSID	Avison-DA98
FW	AD_Built_in_1.16
Connect	Avison_2.4G
Lan IP	10.10.10.254
Wan IP	10.1.121.116
Language	English

3. Completing Your First Scan

3.1 Loading Your Paper

3.1.1 Notice on Using the ADF

Before using the ADF, please make sure that your paper meets the following specifications:

- Document (s) can range in size from 50 x 50 mm (2 x 2 in.) to 216 x 356 mm (8.5 x 14 in.)
- Document (s) can range in weight from 27 ~ 120 g/m² (7 ~ 31 lb.) [rear feeder: 27 ~ 413 g/m² (7 ~ 110 lb.)]
- ID cards up to 1.25 mm (0.05 in.) thick
- Plastic cards compliant with the ISO7810 ID-1 type
- Document(s) should be square or rectangular and in good condition (not fragile or worn).
- Document(s) should be free of curl, wrinkle, tears, wet ink, or punch holes.
- Document(s) should be free of staples, paper clips, paper sticky notes.

3.1.2 Loading Your Document into the ADF Paper Tray

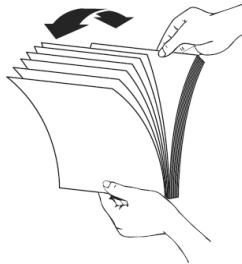
Fanning Your Document



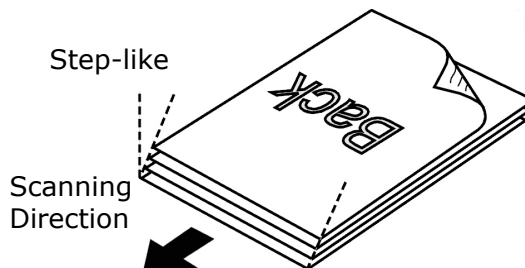
NOTE:

To avoid occasional multi-feeds or paper jams, please fan your documents and align the top edges before feeding them into the scanner.

1. Hold both ends of the documents and fan them a few times.

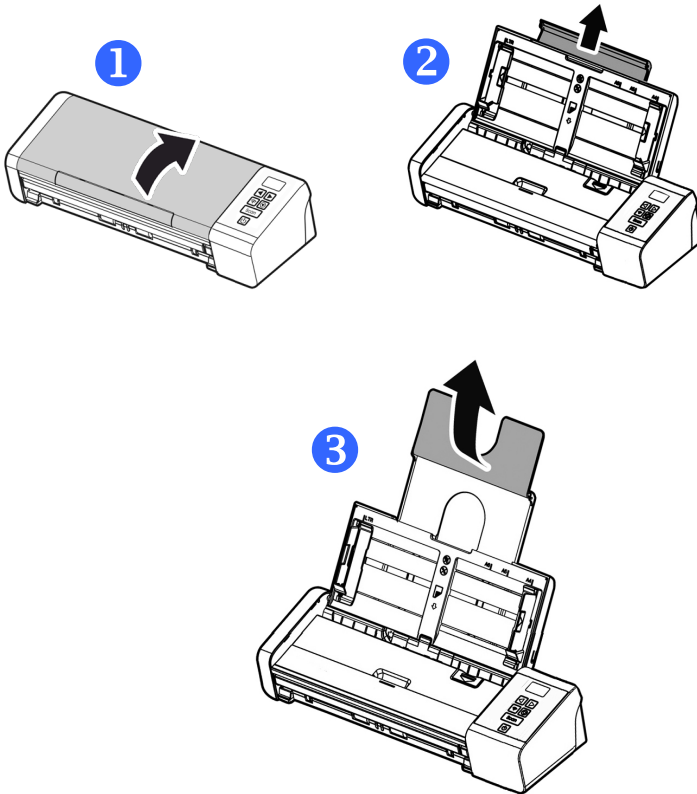


2. Rotate the documents by 90 degrees and fan them in the same manner.
3. Align the edges of the documents in a step-like pattern (see picture below).

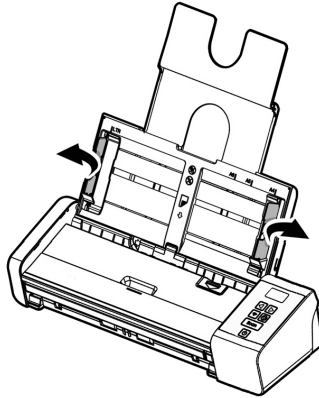


3.1.3 Loading Paper to the Document Feeder

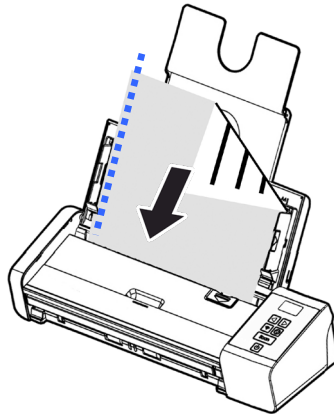
1. Unfold the document feeder and its extension.



-
2. Raise the paper guide to hold your multi-page document.



3. Load the stack of document **Facing Down** with the top of the pages pointing into the feeder.



4. Verify that the paper guides are aligned with the edges of the stack.

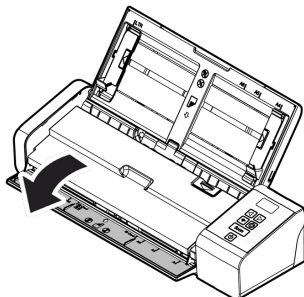


IMPORTANT:

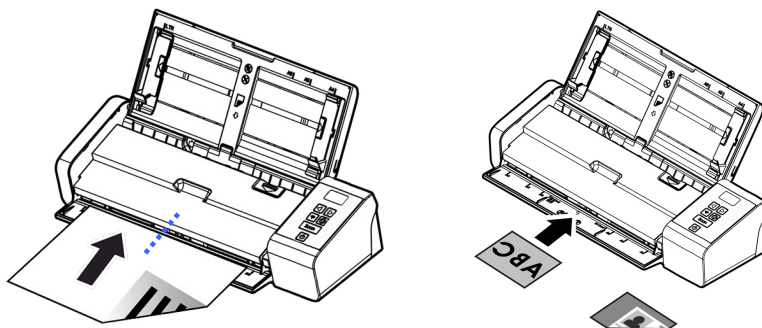
To load paper through the automatic document feeder, be sure to close the cover of the front input tray.

3.1.4 Loading A Single-Page Document into the Front Input Tray

1. Open the cover of the front input tray.



2. Load your single-page document to the front input tray with the top of the page pointing to the front input tray. Load one-sided document with the text **facing down**.



3. Center your document with the paper size marks.

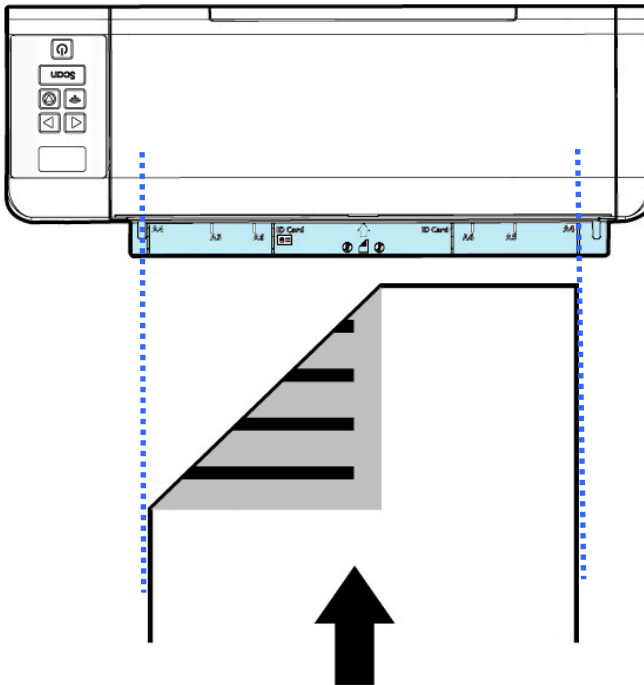


IMPORTANT:

Only one sheet of paper is allowed to load in the front paper tray.

3.1.5 Loading A Single-Page Document into the Rear Feed Tray

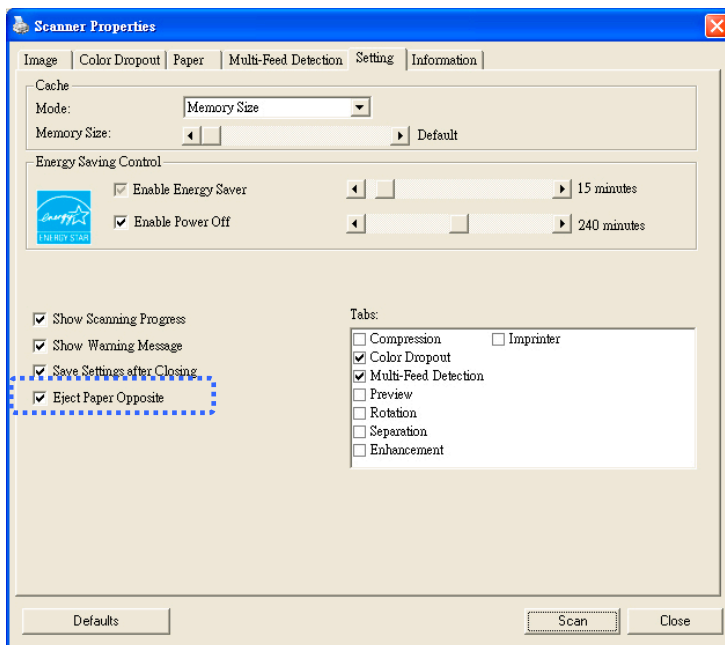
Load your single-page document **FACE DOWN, TOP EDGE FIRST** into the rear feed tray, align it to the paper size mark, and gently push document into the feed tray as indicated.



3.1.6 Ejecting Paper Opposite

If you are feeding paper from the front or rear feed tray, the scanner provides two eject paths: documents can be ejected to the opposite side of your feed tray, or to the same side of your feed tray (default).

You can switch between these paths by checking or not checking the "eject paper opposite" on the [**Setting**] tab of the TWAIN user interface (scanner Properties dialog box). Select an eject method according to your needs.

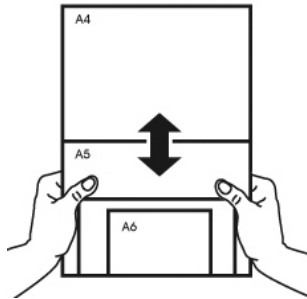


* Note: The feature is only available in Avision TWAIN driver for Windows.

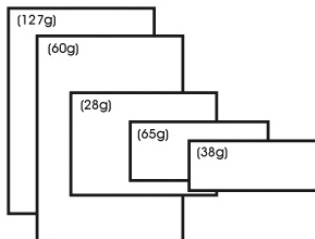
3.1.7 Scanning a Stack of Document with Various Sizes and Weights

When scanning a batch of documents with different sizes and weights, be sure to follow these guidelines to avoid a skewed image or a paper jam:

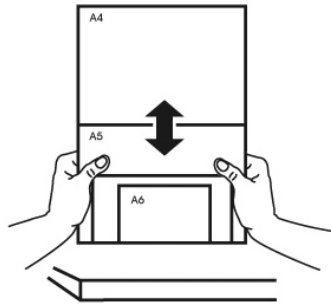
1. Align the documents **TOP EDGE** first in the sequence of paper size from large to small.



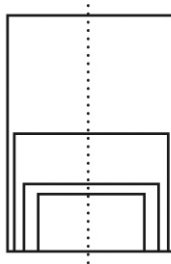
2. If two pages are of the same size yet with different weight, arrange these pages in the sequence of paper weight from heavyweight to lightweight.



3. Align the edges of the documents by tapping the bottom of the stack against the table top.



4. Center these pages in the document feeder and make sure that the edges of page of the largest size slightly touch the Paper Guide.



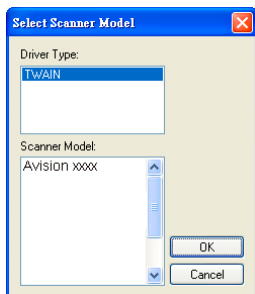
3.2 Verifying Your Scanner Installation

To verify if your scanner installation is correct, Avision provides you a useful test program called Avision Capture Tool. With this tool, you can perform simple scans and view the captured images. In addition, it helps you complete your scan at a rated speed.

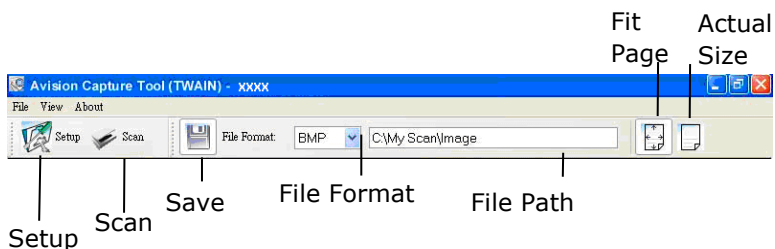
The following procedure describes how to verify your scanner installation. If the installation is not correct, please review the preceding section to check if the cable connection and scanner driver have been successfully installed.

Before you begin, be sure the scanner is on.

1. Select Start>Programs>Avision xxx Scanner>Avision Capture Tool. The Select Scanner Model dialog box will be displayed.



2. Select your driver type and scanner model and click OK. The following Avision Capture Tool dialog box will be displayed.



3. Choose your desired file format from the File Format drop down list box. (Default is JPEG, other choice includes TIFF, MTIFF, PDF, MPDF, GIF, and BMP.) The supported file formats vary depending on your scanner model.
4. Type your desired folder name and file name in the File Path box. (Default is C:\Documents and Settings\User Name\My Documents\My Scan\Image.)

NOTE:

If you do not wish to save the scanned image, deselect the Save button since default is Save Enable. In this case, the thumbnail view will be disabled. And therefore, after viewing all the scanned images, only the last one will remain on the screen.


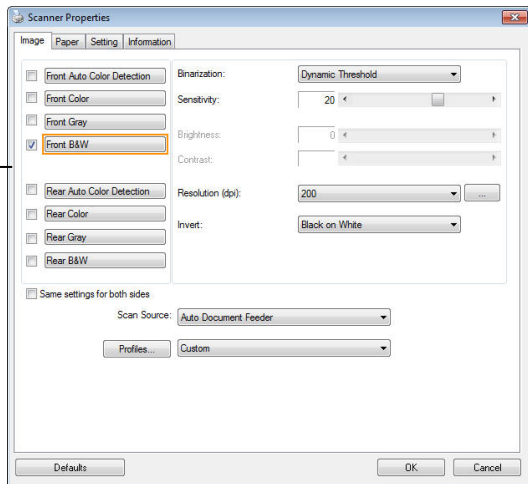
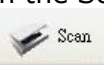
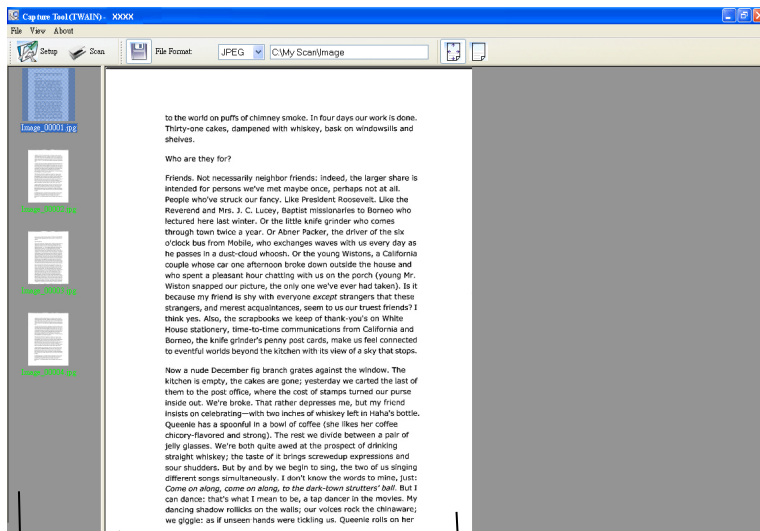
5. Click the Setup button () or choose Setup from the File menu to prompt the Scanner Properties dialog box.

Image
Selection
Box

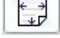



6. From the Image Selection Box, choose your desired image type for your scanned image. (Default is Front B&W) If you have a duplex scanner, choose Front and Rear to scan both sides of your document.
7. Click OK to quit the Scanner Properties dialog box. (To learn more details about the Scanner Properties dialog box, please see the subsequent chapter, *Using the Scanner Properties Dialog Box*.)
8. Place your document face down on the document glass or face up in the auto document feeder.
9. In the Scan Validation dialog box, click the Scan button () or choose Scan from the File menu.
10. The document will be scanned and displayed in the Scan Validation screen. After the scanned images have been displayed, your scanner installation verification is completed.



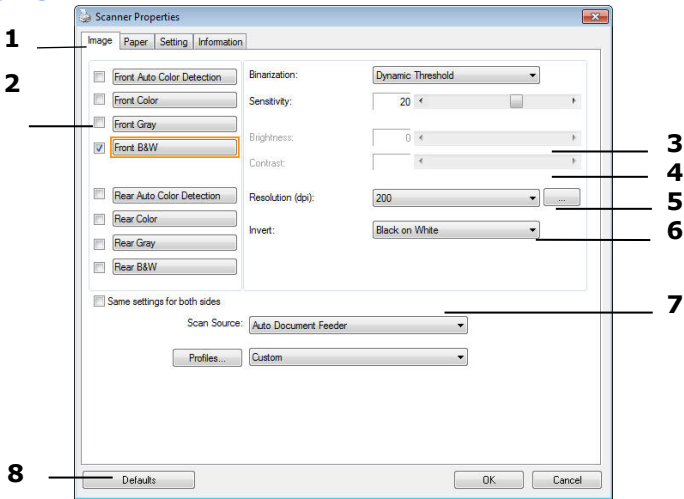
Thumbnail View

Display View

11. You can view the scanned image in Fit Page () or Actual Size (100%) button () from the Viewing toolbars at the right side.
12. Click the Close box or Quit from the File menu to exit the Scan Validation Tool.

3.3 A Glance of the Scanner Properties Dialog Box

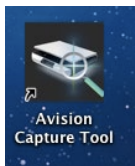
Windows:



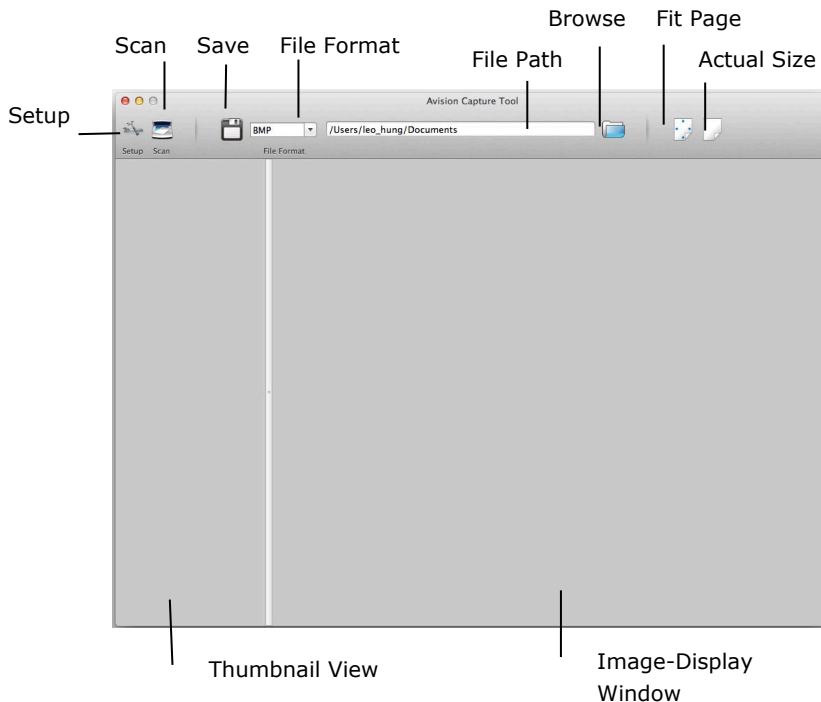
- 1. Tab Options** Choice: Image, Compression, Color Dropout, Paper, Multi-Feed Detection, Preview, Options, Settings, Information.
 - 2. Image Selection Box** Choose your image type and the side of document you wish to scan. Options vary based on type of scanner.
 - 3. Brightness** Adjust the brightness level from -100 to +100.
 - 4. Contrast** Adjust the contrast level from -100 to +100.
 - 5. Resolution** Determine the quality of the scanned image. The industry standard is 200 dpi.
 - 6. Invert** Reverse the color of your scanned image.
 - 7. Scan Source** **Choice:** Auto Document Feeder, Flatbed, Flatbed (Book), Automatic (varies due to different scanner model)
 - 8. Defaults** Reset all values on the tabs to the factory default settings.
-

Mac OS:

1. Double-click the [**Avision Capture Tool**] icon on your desktop. The following [**Avision Capture Tool**] main window will be displayed.




The [**Avision Capture Tool**] icon

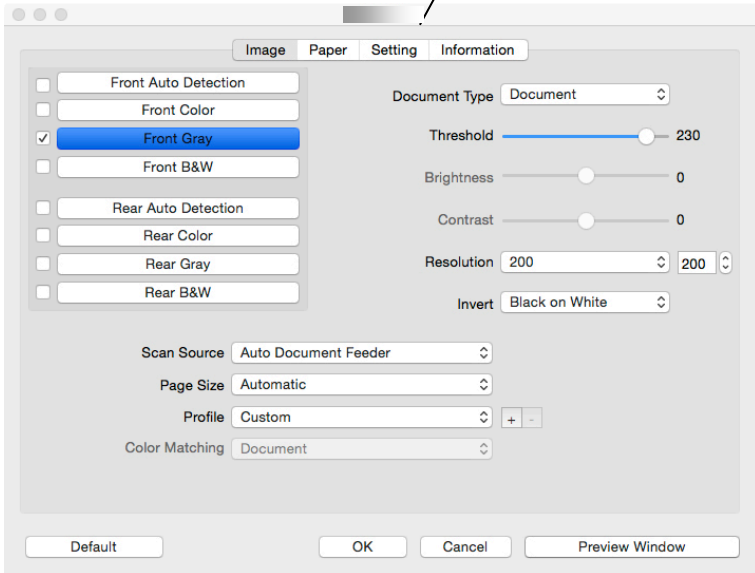


To leave the TWAIN user interface, click () on the upper-left corner.


To scan a page,

1. Click the [**Setup**] button () to access the Avison Scanner Properties dialog box.

This indicates the scanner model




2. From the Image Selection Box, choose your desired image type for your scanned image. (Default is Front B&W) If you have a duplex scanner, choose Front and Rear to scan both sides of your document.
3. Click **OK** to quit the Avison Scanner Properties dialog box. (To learn more details about using the Avison Scanner Properties dialog box, please see the subsequent chapter, *Using the Avison Properties Dialog Box.*)
4. Place your document face down on the document glass or face up in the auto document feeder.

5. Click the Scan button ().

6. The document will be scanned and displayed in the main window of Avision Capture Tool.



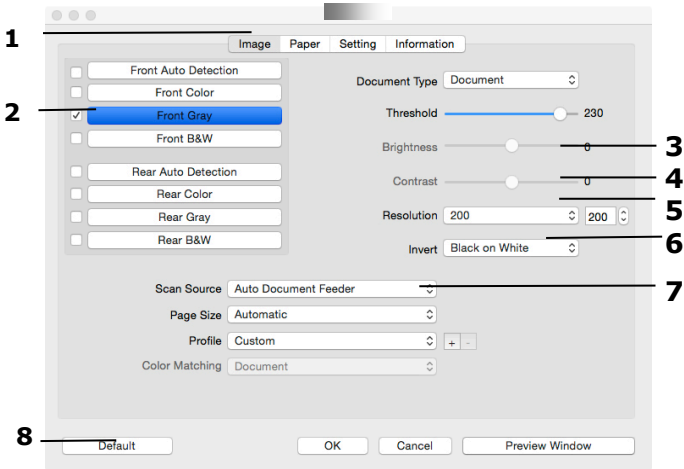
7. To leave the main window of Avision Capture Tool, click () on the upper-left corner.



Important!

- Please note the scanner buttons do not work if you start a scan via the Avision Capture Tool.
- To perform your first scan, we recommend you to use the default scan settings. When you become more familiar with the software, change the scan settings to fit your own purpose.

A Glance of the User Interface



1. Tab Options Choice: Image, Compression, Color Dropout, Paper, Multi-Feed Detection, Preview, Options, Settings, Information.

2. Image Selection Box Choose your image type and the side of document you wish to scan. Options vary based on type of scanner.

3. Brightness Adjust the brightness level from -100 to +100.

4. Contrast Adjust the contrast level from -100 to +100.

5. Resolution Determine the quality of the scanned image. The industry standard is 200 dpi.

6. Invert Reverse the color of your scanned image.

7. Scan Source **Choice:** Auto Document Feeder, Flatbed, Flatbed (Book), Automatic (varies due to different scanner model)

8. Defaults Reset all values on the tabs to the factory default settings.

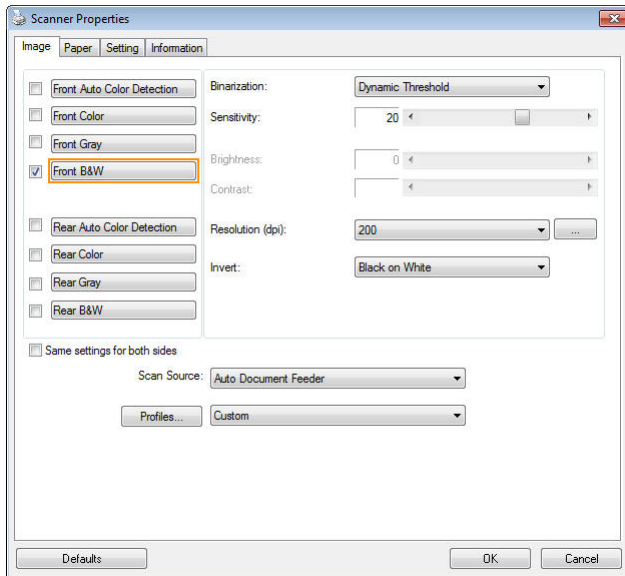
4. Using the Scanner Properties Properties Dialog Box

The Scanner Properties dialog box allows you to configure the scanner's settings. It consists of several tabbed windows each of which will be described in this chapter.

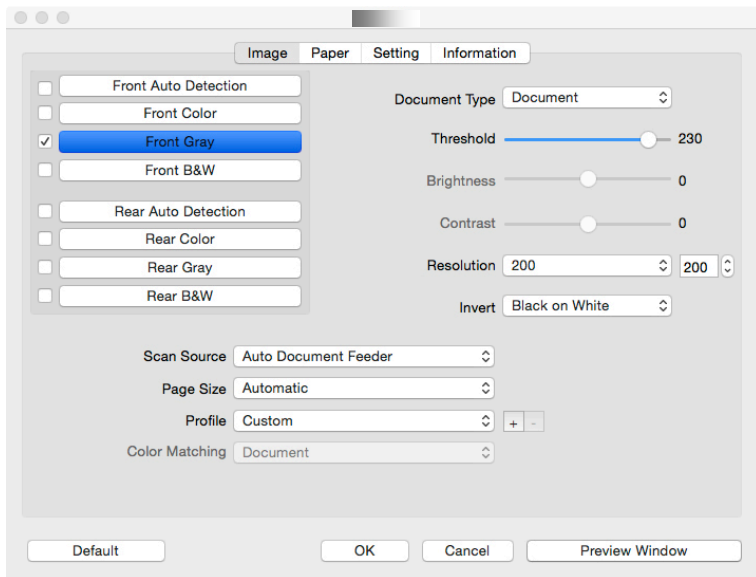


NOTE:

In this chapter, all options are available based on a duplex (double-side) scanner. If you have purchased a simplex (single-side) scanner, all options are available for single sided only.

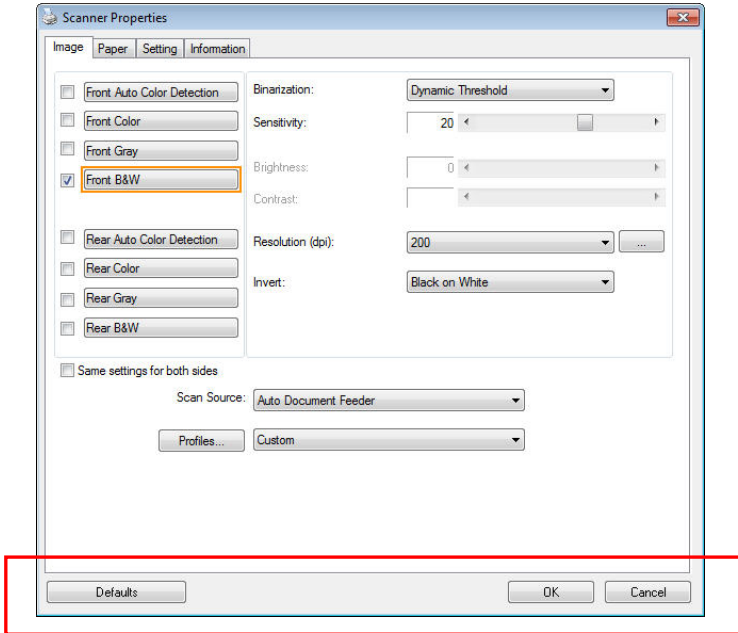


The Scanner Properties dialog box (Windows)



The Scanner Properties dialog box (Mac OS)

4.1 Buttons on the Scanner Properties Dialog Box



The buttons on the Scanner Properties dialog box

BUTTONS DESCRIPTION

Defaults Click the **Defaults** button, the factory default settings will be shown on each tab.

Cancel Click the **Cancel** button to leave the Scanner Properties dialog box.

Preview Window (Mac) Click to show a preview image in a low resolution.

The following table shows the default settings :


TAB NAME	DEFAULT SETTINGS
Image	Image : Front B&W Binarization : Dynamic Threshold Resolution : 200 dpi Invert : Blank on White Scan Source : Auto Document Feeder Threshold : None Brightness : None Contrast : None
Compression	None
Color Dropout	None
Paper	Cropping : Automatic Deskew : Yes Orientation : Portrait OverScan : 0.00 Note: The availability of this option varies due to scanner model. Unit : Inch
Multi-Feed Detection	None
Preview	None
Options	Rotation Degrees : None Blank Page Removal : None Edge Fill : White · 0 mm Image Control Option : None
Setting	Enable Energy Saver : Enable, 15 minutes after last scan action Show Scanning Progress : Yes Show Warning Message : Yes Save Settings after Closing : Yes
Imprinter	Digital Imprinter

4.2 Showing or Hiding Tabs


Windows

The [**Scanner Properties**] dialog box is displayed in default with three basic tabs - Image, Paper, and Information. To show more tabs, click the [**Scanner Properties**] icon to access more scan settings.

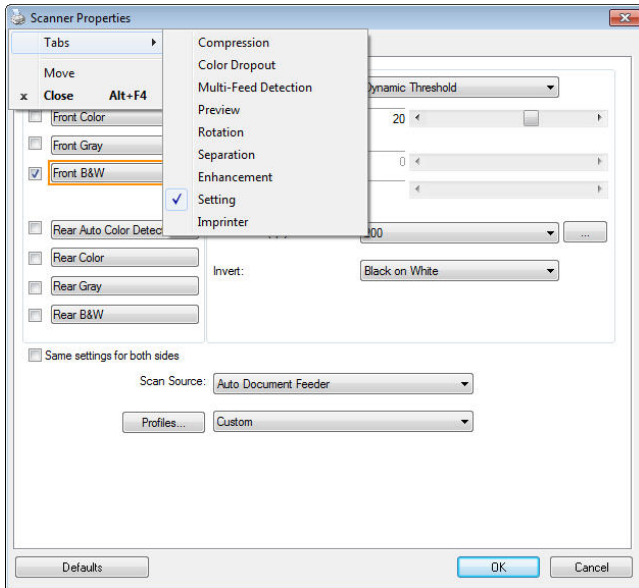
To show more tabs,

1. Click the [**Scanner Properties**] icon () on the upper left corner, and choose [**Tab**] to show available tab names. The available tabs include Compression, Color Drop out, Preview, Rotation, Separation, Multi-Feed, Options, Settings, and Imprinter. (Note: the options vary based on scanner model.)
2. Choose the tab you want to display. The selected tab will be shown with a check mark and then displayed in the [**Scanner Properties**] dialog box.
3. To access the settings, click the selected tab on the top of the [**Scanner Properties**] dialog box. The page of the selected tab will be displayed.

To hide a tab window,

1. Click the [**Scanner Properties**] icon () on the upper left corner, and choose [**Tab**] to show available tab names.
2. Choose the tab you want to hide. Then, the selected tab will be hidden in the [**Scanner Properties**] dialog box.

Note: The [**Image**], [**Paper**], and [**Information**] tab can not be hidden since they are preprogrammed to be displayed by default.



(Windows)

Mac OS

The [**Scanner Properties**] dialog box is displayed in default with four basic tabs - Image, Paper, Setting, and Information. To show more tabs, click the [**Setting**] tab to access more scan settings.

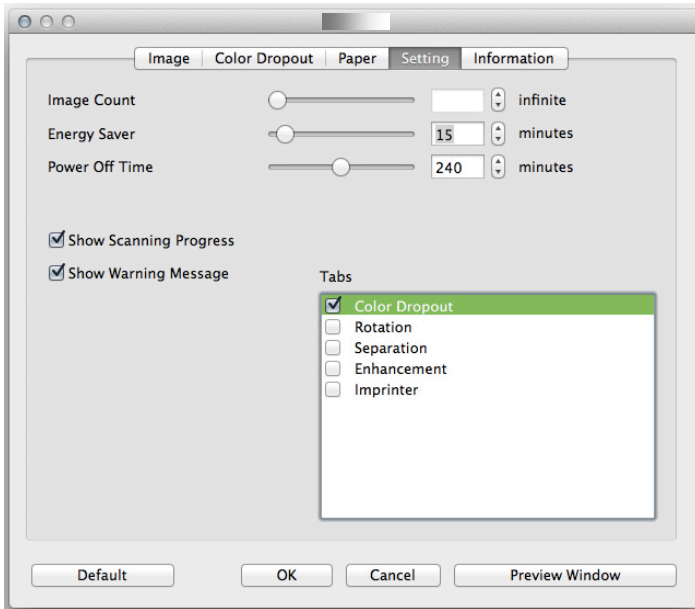
To show more tabs,

1. Click the [**Setting**] tab, the available tab names will be displayed. These tabs include Color Drop out, Rotation, Separation, Enhancement, and Imprinter. (Note: the options vary based on scanner model.)
2. Choose the tab you want to display. The selected tab will be shown with a check mark and then displayed in the [**Scanner Properties**] dialog box.
3. To access the settings, click the selected tab on the top of the [**Scanner Properties**] dialog box. The page of the selected tab will be displayed.

To hide a tab window,

1. Click the [**Setting**] tab to show available tab names.
2. Choose the tab you want to hide by deselecting the tabs which have been shown with a check mark. Then, the selected tab will be hidden in the [**Scanner Properties**] dialog box.

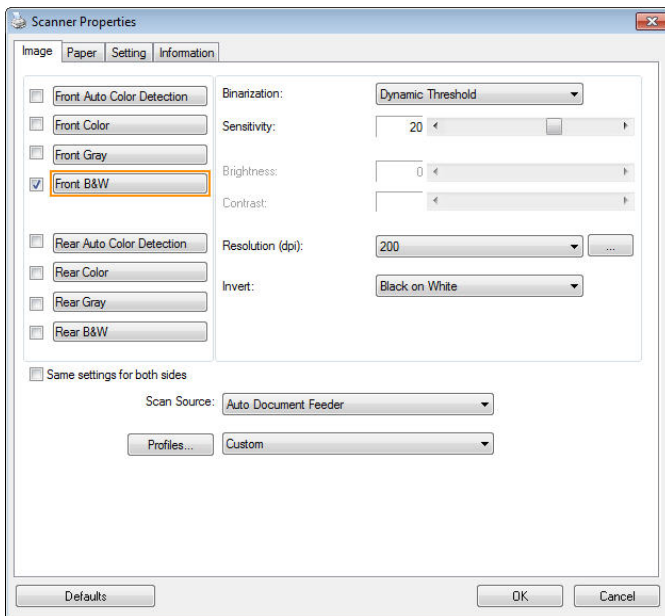
Note: The [**Image**], [**Paper**], [**Setting**], and [**Information**] tab can not be hidden since they are preprogrammed to be displayed by default.



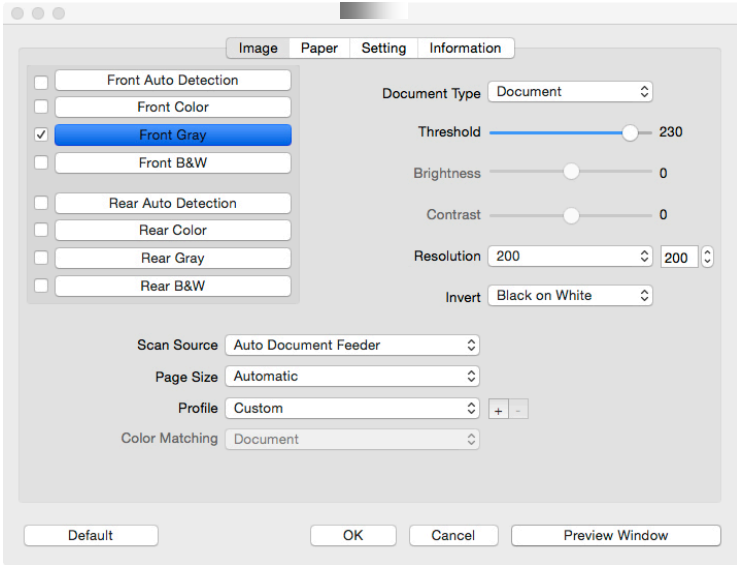
(Mac OS)

4.3 The Image Tab

The Image tab allows you to choose the front side and (or) the rear side of your document, the type of image, and to set several basic scan settings. Note that except for the resolution, you can set individual scan settings for the front side and the rear side. For example, all settings in the Image tab, Compression tab, Color Dropout tab can be set individually for the front and the rear side. However, the settings in the Paper tab, the Option tab, and the Setting tab have to be set the same for the front and rear side.



The Image tab dialog box (Windows)



The Image tab dialog box (Mac)

Front/Rear Auto Color Detection:

Click to automatically detect and scan the front or the rear page of your color document in color image mode. If your document is in colors, the scanner will automatically scan the document into a color image. If your document is non-color, you can choose the output to be either B&W or Gray from the Non-Color Selection option. This option is useful when you have a mixture of color and non-color document.

Note: If you choose Front Rear Auto Color Detection, you can not specify the image mode of your rear page and vice versa.

Modes of Auto Color Detection:

If [**Front/Rear Auto Color Detection**] is selected, its modes will be displayed. **Choice includes Normal, Ignore Paper Color.** For paper with background color such as invoices, choosing [**Ignore Paper Color**] will automatically remove the background color and enhance the detection accuracy.

INVOICE

4450 00-123-02 Date: July 31, 2002

INVOICE of 5.56x Square Parts for Automotive Seats

For account and title of: **ABC Manufacturing Co., Ltd.**
 2220 Elliot Avenue, Seattle, WA 98101 U.S.A. Tel: 252-922-6099 ext 2230 Fax: 252-922-6010

Attn: Mr. David Wang

Shipped by: **SST Technology Inc.** For: **U. Line Express**
 Shipped on or about: **July 31, 2002** From: **Taiwan, R. O. C.** to: **U.S.A.**
 I/C No. Contract No. A1233

Make & Nos.	Description of Goods	Quantity	Unit Price	Amount
ABC	Contract Item No. 101	3.000	1000.000	1000.000
ABC	Contract Item No. 101	3.000	1000.000	1000.000
ABC	Contract Item No. 102	3.000	1000.000	1000.000
P/O No. 0123				
Made in Taiwan				
R.O.C.				
Total		9.000		US\$9000.00

Sample of No. Commercial Value
 Value For Customs Purpose Only
 Country of Origin: Taiwan, R. O. C.

NW:
 GW:
 Measurement:

Normal

INVOICE

4450 00-123-02 Date: July 31, 2002

INVOICE of 5.56x Square Parts for Automotive Seats

For account and title of: **ABC Manufacturing Co., Ltd.**
 2220 Elliot Avenue, Seattle, WA 98101 U.S.A. Tel: 252-922-6099 ext 2230 Fax: 252-922-6010

Attn: Mr. David Wang

Shipped by: **SST Technology Inc.** For: **U. Line Express**
 Shipped on or about: **July 31, 2002** From: **Taiwan, R. O. C.** to: **U.S.A.**
 I/C No. Contract No. A1233

Make & Nos.	Description of Goods	Quantity	Unit Price	Amount
ABC	Contract Item No. 101	3.000	1000.000	1000.000
ABC	Contract Item No. 101	3.000	1000.000	1000.000
ABC	Contract Item No. 102	3.000	1000.000	1000.000
P/O No. 0123				
Made in Taiwan				
R.O.C.				
Total		9.000		US\$9000.00

Sample of No. Commercial Value
 Value For Customs Purpose Only
 Country of Origin: Taiwan, R. O. C.

NW:
 GW:
 Measurement:

Ignore single background color

Sensitivity of Auto Color Detection

If your documents contain primarily B&W text and small amount of light or pale colors and you do not wish them to be recognized as color image to save the file size, you can increase the sensitivity value by moving the bar to the right to let these images to be detected as B&W. The value ranges from 1 to 100. The default is 37.

Standard	IEEE 802.11 b/g/n standards compliant	
Wireless LAN	1T1R Mode	
Frequency Range	2.400 ~ 2.4835GHz (subject to local regulations)	
Number of Selectable Channels	802.11n: 20MHz/40MHz	
	USA, Canada (FCC):11 channels (2.412GHz~2.462GHz)	
	802.1 Europe (CE): 13 channels (2.412GHz~2.472GHz)	
	1b/g: Japan (TELECOM): 14 channels (2.412GHz~2.4835GHz)	
Data Rate	802.11n: up to 150Mbps	
	802.11b: 1, 2, 5.5, 11Mbps	
	802.11g: 6, 9, 12, 18, 24, 36, 48, 54Mbps	
Transmit Power(EIRP)	11n HT40 MCS7 : +13 dBm	
	11g OFDM: +15 dBm	
	11b CCK: +18 dBm	
Security	WEP 64/128, TKIP, WPA, WPA2 mixed,802.1x and 802.11i	

Original

Standard	IEEE 802.11 b/g/n standards compliant	
Wireless LAN	1T1R Mode	
Frequency Range	2.400 ~ 2.4835GHz (subject to local regulations)	
Number of Selectable Channels	802.11n: 20MHz/40MHz	
	USA, Canada (FCC):11 channels (2.412GHz~2.462GHz)	
	802.1 Europe (CE): 13 channels (2.412GHz~2.472GHz)	
	1b/g: Japan (TELECOM): 14 channels (2.412GHz~2.4835GHz)	
Data Rate	802.11n: up to 150Mbps	
	802.11b: 1, 2, 5.5, 11Mbps	
	802.11g: 6, 9, 12, 18, 24, 36, 48, 54Mbps	
Transmit Power(EIRP)	11n HT40 MCS7 : +13 dBm	
	11g OFDM: +15 dBm	
	11b CCK: +18 dBm	
Security	WEP 64/128, TKIP, WPA, WPA2 mixed,802.1x and 802.11i	

Standard	IEEE 802.11 b/g/n standards compliant	
Wireless LAN	1T1R Mode	
Frequency Range	2.400 ~ 2.4835GHz (subject to local regulations)	
Number of Selectable Channels	802.11n: 20MHz/40MHz	
	USA, Canada (FCC):11 channels (2.412GHz~2.462GHz)	
	802.1 Europe (CE): 13 channels (2.412GHz~2.472GHz)	
	1b/g: Japan (TELECOM): 14 channels (2.412GHz~2.4835GHz)	
Data Rate	802.11n: up to 150Mbps	
	802.11b: 1, 2, 5.5, 11Mbps	
	802.11g: 6, 9, 12, 18, 24, 36, 48, 54Mbps	
Transmit Power(EIRP)	11n HT40 MCS7 : +13 dBm	
	11g OFDM: +15 dBm	
	11b CCK: +18 dBm	
Security	WEP 64/128, TKIP, WPA, WPA2 mixed,802.1x and 802.11i	

Sensitivity: 1
(The image is recognized as a color one)

Sensitivity: 100
(The image is recognized as a black and white one)

Same settings on both sides:

Click to apply same scan settings for both sides of your documents. After checking this option, any settings you have changed will automatically applied to both the front side and the rear side. For example, if you choose your ideal resolution to be 300 dpi, this will be applied both to the front side and rear side of your document.

4.3.2 Other Image Options

Binarization This is the process of converting a grayscale or color image to a bi-tonal image. There are several different methods of performing this conversion.

Options: Dynamic Threshold, Dynamic Threshold (AD), Fixed Processing, Halftone 1~5, Error Diffusion.

Dynamic Threshold: Selecting **Dynamic Threshold** allows the scanner to dynamically evaluate each document to determine the optimal threshold value to produce the highest quality image. This is used to scan mixed document containing faint text, shaded background, or color background with a single setting. If Dynamic Threshold is selected, Threshold, Brightness, and Contrast are not available.

Dynamic Threshold (AD): Selecting **Dynamic Threshold (AD)** to perform the enhanced mode of the Dynamic Threshold feature. However, using this mode may slow down your scanning speed.

Sensitivity of Dynamic Threshold Occasionally your scanned image may contain small dots or speckles. To remove these spots, increase the sensitivity value by moving the bar to the right. The value ranges from 1 to 30. The default is 20.

Fixed Processing: Used for black-and-white and other high contrast documents. A single level is set to determine the black-and-white transition. The threshold is programmable over the entire density range. **Fixed Processing** sets Contrast to 0. If **Fixed Processing** is selected, Contrast is not available.

Halftone: In addition to the black and white display, Halftone can present a somehow gray shade of image by using different size of dots. Halftone image looks like the picture we have seen in the newspaper. **Options include Halftone 1, Halftone 2, Halftone 3, Halftone 4, Halftone 5.**

Error Diffusion: Error Diffusion is a type of Halftone. Error Diffusion gives good image texture and makes text in images more readable than Halftone.



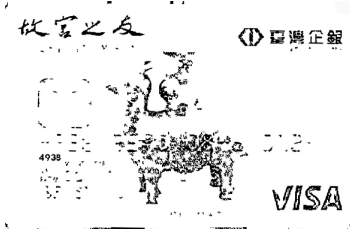
Halftone Image



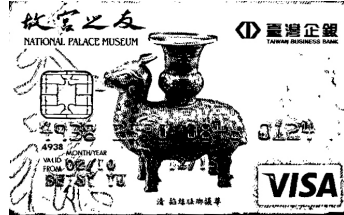
F. Michelangi
Architecture
this huge volu
sculpture, pai
photographs,
ceiling with a
illus. (120 in c
10 3/4" x 14"

G. NEW Botti
Renaissance
unprecedented
first lifesize m
enormous net

Error Diffusion Image



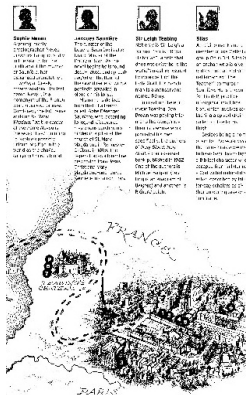
Dynamic Threshold



Dynamic Threshold (AD)

Threshold

Used to convert a grayscale image to a bi-tonal image. The value ranges from 0 to 255. A low threshold value produces a lighter image, and can be used to subdue backgrounds and subtle, unneeded information. A high threshold value produces a darker image, and can be used to help pick up faint images. Adjust the threshold setting by dragging the Threshold sliding bar to the left or right to achieve the desired threshold setting.



**200 dpi,
Threshold:50,
Brightness: 0**



**200 dpi,
Threshold:100,
Brightness: 0**

Gray

Document Type: Choice: Normal, Photo, Document

Three options of document type are provided when you choose Gray as the image type for your scanned document. **Choice: Normal, Photo, Document.**

- **Document:** Choose Document if your original contains pure text or a mixture of text and graphic since it is an optimal setting for regular business document. When using Document, only Threshold can be adjusted.
- **Photo:** Choose Photo if your original contains photo to reproduce your photo in vivid grayscale image. When using Photo, no Threshold and Contrast can be adjusted.
- **Normal:** When using **Normal**, Threshold, Brightness, and Contrast can be adjusted.

Threshold: The value ranges from 0 to 255. The default is 230. A low threshold value produces a lighter image, and can be used to subdue backgrounds and subtle, unneeded information. A high threshold value produces a darker image, and can be used to help pick up faint images. Adjust the threshold setting by dragging the **Threshold** sliding bar to the left or right to achieve the desired threshold setting.

1. Power On/Off button
2. Start/Stop button
3. Stop button
4. Copy button
5. Scan button
6. Cancel button
7. Home button
8. Menu button
9. Back button
10. Help button

Parameter	Default value	Valid range
Resolution	300 dpi	75-600 dpi
Color mode	Color	Color, Grayscale, Black & White
Image size	A4	A4, A5, Letter, Legal, Executive, Ledger, 11x17, 12x18, 13x19, 14x19, 15x22, 16x22, 17x22, 18x22, 19x22, 20x22, 21x22, 22x22, 23x22, 24x22, 25x22, 26x22, 27x22, 28x22, 29x22, 30x22, 31x22, 32x22, 33x22, 34x22, 35x22, 36x22, 37x22, 38x22, 39x22, 40x22, 41x22, 42x22, 43x22, 44x22, 45x22, 46x22, 47x22, 48x22, 49x22, 50x22, 51x22, 52x22, 53x22, 54x22, 55x22, 56x22, 57x22, 58x22, 59x22, 60x22, 61x22, 62x22, 63x22, 64x22, 65x22, 66x22, 67x22, 68x22, 69x22, 70x22, 71x22, 72x22, 73x22, 74x22, 75x22, 76x22, 77x22, 78x22, 79x22, 80x22, 81x22, 82x22, 83x22, 84x22, 85x22, 86x22, 87x22, 88x22, 89x22, 90x22, 91x22, 92x22, 93x22, 94x22, 95x22, 96x22, 97x22, 98x22, 99x22, 100x22

Normal

Parameter	Default value	Valid range
Resolution	300 dpi	75-600 dpi
Color mode	Color	Color, Grayscale, Black & White
Image size	A4	A4, A5, Letter, Legal, Executive, Ledger, 11x17, 12x18, 13x19, 14x19, 15x22, 16x22, 17x22, 18x22, 19x22, 20x22, 21x22, 22x22, 23x22, 24x22, 25x22, 26x22, 27x22, 28x22, 29x22, 30x22, 31x22, 32x22, 33x22, 34x22, 35x22, 36x22, 37x22, 38x22, 39x22, 40x22, 41x22, 42x22, 43x22, 44x22, 45x22, 46x22, 47x22, 48x22, 49x22, 50x22, 51x22, 52x22, 53x22, 54x22, 55x22, 56x22, 57x22, 58x22, 59x22, 60x22, 61x22, 62x22, 63x22, 64x22, 65x22, 66x22, 67x22, 68x22, 69x22, 70x22, 71x22, 72x22, 73x22, 74x22, 75x22, 76x22, 77x22, 78x22, 79x22, 80x22, 81x22, 82x22, 83x22, 84x22, 85x22, 86x22, 87x22, 88x22, 89x22, 90x22, 91x22, 92x22, 93x22, 94x22, 95x22, 96x22, 97x22, 98x22, 99x22, 100x22

Photo

Parameter	Default value	Valid range
Resolution	300 dpi	75-600 dpi
Color mode	Color	Color, Grayscale, Black & White
Image size	A4	A4, A5, Letter, Legal, Executive, Ledger, 11x17, 12x18, 13x19, 14x19, 15x22, 16x22, 17x22, 18x22, 19x22, 20x22, 21x22, 22x22, 23x22, 24x22, 25x22, 26x22, 27x22, 28x22, 29x22, 30x22, 31x22, 32x22, 33x22, 34x22, 35x22, 36x22, 37x22, 38x22, 39x22, 40x22, 41x22, 42x22, 43x22, 44x22, 45x22, 46x22, 47x22, 48x22, 49x22, 50x22, 51x22, 52x22, 53x22, 54x22, 55x22, 56x22, 57x22, 58x22, 59x22, 60x22, 61x22, 62x22, 63x22, 64x22, 65x22, 66x22, 67x22, 68x22, 69x22, 70x22, 71x22, 72x22, 73x22, 74x22, 75x22, 76x22, 77x22, 78x22, 79x22, 80x22, 81x22, 82x22, 83x22, 84x22, 85x22, 86x22, 87x22, 88x22, 89x22, 90x22, 91x22, 92x22, 93x22, 94x22, 95x22, 96x22, 97x22, 98x22, 99x22, 100x22

Document
(Threshold: 230)



Normal



Photo



Document
(Threshold: 230)

Resolution

A good control of the resolution results a good detail of an image that scans. The resolution is measured by dots per inch (dpi). Normally, the greater the dpi number, the higher the resolution and the image file size. Be aware that greater resolution takes more time to scan, and more disk space for the scanning image. For your information, an A4 size color image scanned at 300 dpi at True Color mode consumes approximately 25 MB of disk space. A higher resolution (usually means over 600 dpi) is only recommended when you need to scan a small area at True Color mode.

Choose a resolution value from the drop down list. The default value is 200 dpi. Available resolutions are 75, 100, 150, 200, 300, 400 and 600. Or you may choose your desired value by clicking the box in the right side of the drop down list and press the arrow key to select your desired value and then click the Add button to include it in the drop down list. **Note:** The resolution is up to 300 dpi if an imprinter or a MICR reader is installed or connected to the scanner.



Resolution: 75 dpi



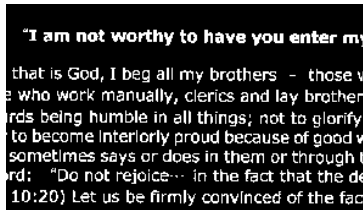
Resolution: 150 dpi

Invert Reverses the brightness and the colors in the image. The default setting is Black on a White background. Reverse mode is White on a Black background. For color images, each pixel will be changed into its complementary color at the command of Invert.

"I am not worthy to have you enter my

that is God, I beg all my brothers - those who work manually, clerics and lay brothers
ards being humble in all things; not to glorify
r to become interiorly proud because of good w
sometimes says or does in them or through t
ord: "Do not rejoice... in the fact that the de
: 10:20) Let us be firmly convinced of the fact

Black on White



"I am not worthy to have you enter my
that is God, I beg all my brothers - those w
e who work manually, clerics and lay brother
ards being humble in all things; not to glorify
to become interiorly proud because of good w
sometimes says or does in them or through t
ord: "Do not rejoice... in the fact that the de
10:20) Let us be firmly convinced of the fac

White on Black

**Scan
Source**

Choice:

- **Auto Document Feeder:** Used to scan multiple pages.
- **Flatbed:** Used to scan a single page. For example, pages from newspaper clipping, paper with wrinkles or curls.
- **Flatbed (book):** Used to scan several inside pages from book.
- **Automatic:** Allow the scanner automatically set its scan source. If **Automatic** is selected and there is document in both the auto document feeder (ADF) and the flatbed, then the scan source will be automatically set to ADF. If **Automatic** is selected and there is document only in flatbed, then the scan source will be set to flatbed.
- **Merge Two Sides into One Image:**
If you have a sheet-fed duplex scanner with front input tray, you can scan an A3 size document with an innovative method. Thus, fold your A3 size document into A4, and then load the paper in the front tray. Choose Merge Two Sides from the Scan Source option and then the scanner is able to scan both sides of your document and merge two A4 images into one A3 image.

When you select Merge Two Sides into One Image, the Cropping or Multi-feed function will be disabled.

Note: This feature must be used with a carrier sheet. Regarding how to load a document with a Carrier Sheet, refer to Section 4.6.2, Other Paper Selection.

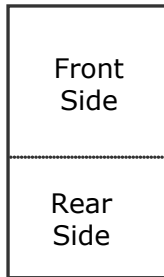
Note the options vary based on type of scanner.

NOTE:

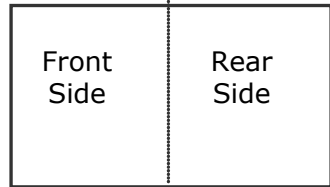


If you have purchased a duplex sheet-fed scanner, choose [Merge Two Sides] on the [Scan Source], then the scanner is able to scan both sides of your document and merge them into a single image.

If “Merge Two Sides into One Image” is selected, its choice will be available including “Merge Horizontally”, “Merge Vertically”, “Merge Vertically (Back Side Flip)”. If the reverse side of your document is upside down, choose “Merge Vertically (Back Side Flip)” and the back side will be automatically rotated 180 degrees and merged.



Merge Vertically



Merge Horizontally

Note the options vary based on type of scanner.

Color Matching

The purpose of Color Matching is getting the accurate color. This option uses the default parameters (ICC profile) to adjust the colors of the image.

Choice: None, Document, Photo

- **None:** Choose "None" to disable this option.
- **Document:** Choose "Document" if your original contains pure text or a mixture of text and graphic since it is an optimal setting for regular business document.
- **Photo:** Choose "Photo" if your original contains photo to reproduce your photo in vivid color image.



Normal



After Color Matching

4.3.3 Scanning color images

The following options are available for scanning color images.

- Brightness
- Contrast
- Resolution
- Invert

4.3.4 Scanning grayscale images

The following options are available for scanning gray images.

- Brightness
- Contrast
- Resolution
- Invert

4.3.5 Scanning B&W images

The following options are available for scanning B&W images.

- Binarization (Dynamic Threshold)
- Resolution
- Invert

Or

- Binarization (Fix Processing)
- Threshold
- Brightness
- Resolution
- Invert

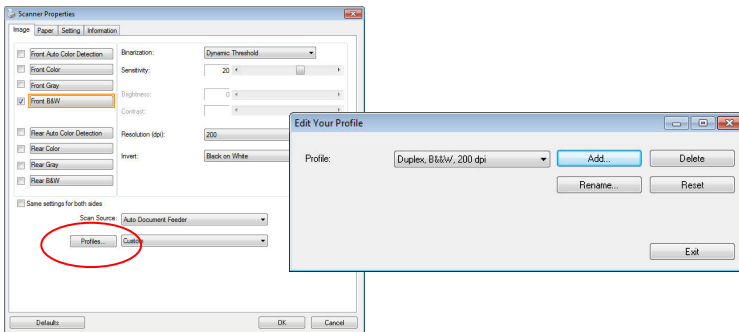
4.3.6 Editing Profiles

The Scanner Properties dialog box allows you to change and save your frequently used scan settings into a profile. You can edit these profiles by renaming or deleting them.

Windows:

To add a new profile

1. Customize your settings. (For example, change your resolution, image type, cropping method, scan size, or other scan settings.)
2. Click the Image tab and then choose "Profiles" to prompt the "Edit Your Profile" dialog box.

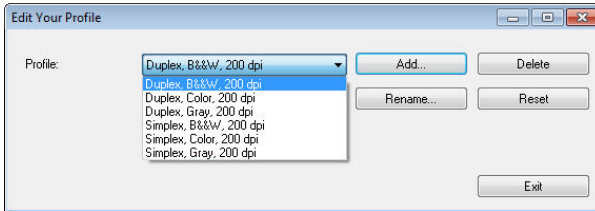


3. Click "Add" to enter the name of the profile and then choose "Save".



4. The new profile will be saved and shown in the "Profiles" dropdown list box.

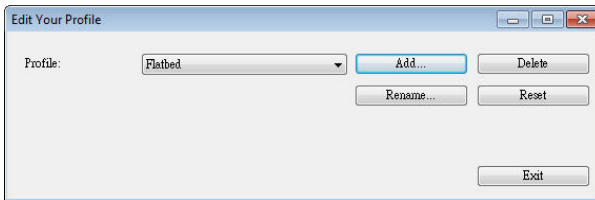
-
- From the Image tab dialog box, choose your favorable profile from the "Profiles" dropdown list box.



- Your favorable profile will be immediately loaded and displayed on Scanner Properties dialog box.

To delete a profile,

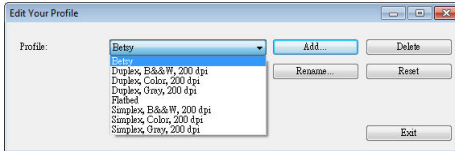
- From the Image tab dialog box, click "Profiles" to prompt the Edit Your Profile dialog box.



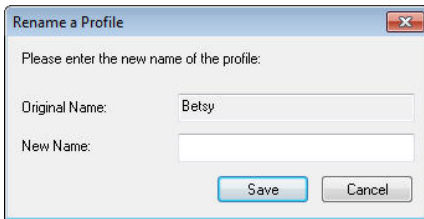
- Choose the profile you want to delete from the dropdown list box.
- Click "Delete". A Confirm message "Are you sure you want to delete this profile?" is prompted.
- Choose "Yes" to delete or "Cancel" to quit.

To rename a profile,

1. From the Image tab dialog box, click "Profiles" to prompt the Edit Your Profile dialog box.



2. Choose the profile you want to rename from the dropdown list box and then click the Rename button.
3. Enter new name for the profile.



4. Choose "Save" to save the new profile or "Cancel" to quit.

NOTE:

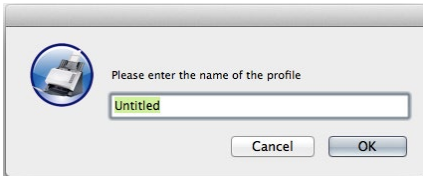


1. The preset default profiles include Flatbed, Simplex-B&W, 200 dpi, Simplex-Gray, 200 dpi, Simplex-Color, 200 dpi, Duplex-B&W, 200 dpi, Duplex-Gray, 200 dpi, Duplex-Color, 200 dpi. If you have a simplex or a sheetfed scanner, the duplex or the flatbed option will not be available.
2. If any setting for a current profile has been changed, a [*] sign will be marked before the name of current profile, for example, [* **Duplex, Color, 200 dpi**]. If desire, click the [OK] or [Scan] button and a dialog box will be prompted to let you save the new profile.

Mac OS

To load a profile (Mac)

1. Customize your settings. (For example, change your resolution, image type, cropping method, scan size, or other scan settings.)
2. Click the Image tab and click "+" on the Profile to enter the name of the profile and then choose "OK".



3. The new profile will be saved and shown in the "Profiles" dropdown list box.

To load a profile,

1. From the Image tab dialog box, choose your favorable profile from the "Profiles" dropdown list box.
2. Your favorable profile will be immediately loaded and displayed on Scanner Properties dialog box.

To delete a profile,

1. Choose the profile you want to delete from the dropdown list box.
2. Click "-". A Confirm message "Are you sure you want to delete this profile?" is prompted.
3. Choose "OK" to delete or "Cancel" to quit.

4.4 The Compression Tab

* The feature is only available for Windows operating system.

The Compression tab allows you to compress your scanned image and choose the level of compression. Bi-tonal images are normally compressed using CCITT standard called Group 4 (G4). Color and grayscale images are often compressed using JPEG technology. Move the **JPEG Quality** slider to the right or left to increase or decrease the level of compression. Note the greater the compression level, the lower image quality. Default is 50%.

Note that the compression depends on your image editing application. If your image editing application does not support the type of compression format, then either a warning message will appear or the image quality of the compressed file will not be acceptable.

JPEG (Joint Photographic Editor Group). This group developed and lent their name to a file compression standard for color and grayscale images that is widely used by scanners, and software applications. On Microsoft Windows-based systems, a file with the extension .jpg has normally been compressed using this standard.

For scanning color or gray images, the following compressions are available:

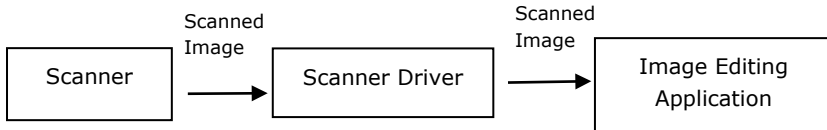
- None
- JPEG

For scanning B&W images, the following compressions are available:

- None
- G4

Compression:

To complete your scan at a rated speed, the scanned image is compressed by default during transmission. However, if you wish to obtain the highest image quality, you can choose to uncompress the image data before it is outputted.



To Application:

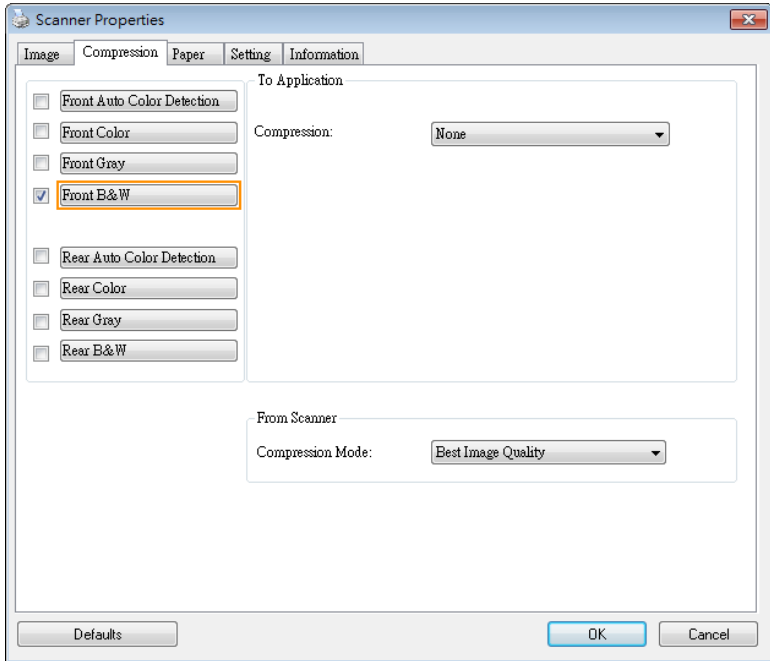
Choose if you wish to compress the image data and transfer it from the TWAIN driver to the application. Note Bi-tonal images are normally compressed using CCITT standard called Group 4 (G4). Color and grayscale images are often compressed using JPEG technology. Move the [**Image Quality**] slider to the right or left to increase or decrease your image quality. Note the greater the image quality, the lower the compression level. Default is 50%.

Note that the compression depends on your image editing application. If your image editing application does not support the type of compression format, then the image of the compressed file will look abnormal.

From Scanner: *(Note: The availability of this feature varies due to scanner model.)*

Choose if you wish to compress the scanned image and transfer it from the scanner to the TWAIN driver.

Choice: Uncompressed, *Best Image Quality (Low Compression Level), Better Image Quality (Normal Compression Level), Normal Image Quality (High Compression Level). (*: Factory Default)



The Compression tab dialog box

4.5 The Color Dropout Tab

4.5.1 Color Dropout Selection

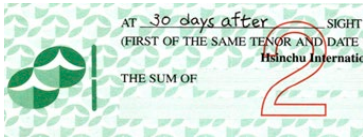
The [**Color Dropout**] tab allows you to select either green, red, blue, or a color of your choice to remove the details of the selected color from a scanned image. This feature is used to sharpen your text when using OCR (Optical Character Recognition) software. Note this feature applies only to the gray or black and white image.

Choice: None, Auto, Remove Red, Remove Green, Remove Blue, Custom

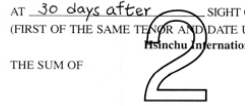
- **None:** Does not remove any color.
- **Auto:** Automatically outputs the image with the details of the primary color removed.
- **Remove Red/Remove Green/Remove Blue:** Outputs the image with the details of the specified color removed.
- **Custom:** Specify the color you wish to remove by entering its RGB (Red, Green, and Blue) value respectively.

Advanced Options:

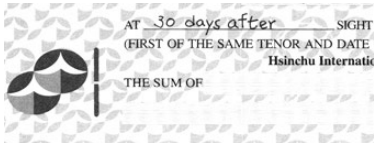
- **Quality Mode:** Range: 0~20. Default: 10
When [Quality Mode] is selected, you can determine the color to be dropped out using the [Filter Threshold] slider. A lower value will drop more of the selected color out, while a higher value will leave more of the selected color in.
- **Normal Mode:** Use an optimized setting to determine the color.



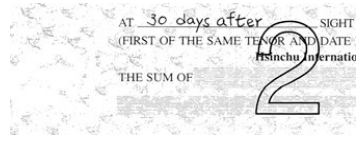
Original



Auto/Remove Green (normal mode)




Remove Red (normal mode)



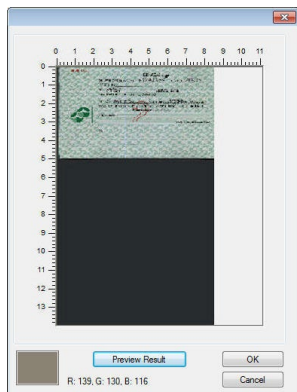
Remove Green (quality mode: Threshold: 18)

Preview the color dropout result:

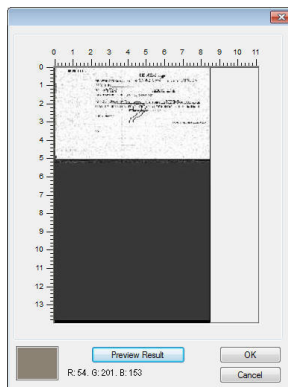
To preview the color dropout result, please follow these steps:

1. Click the [**Scanner Properties**] icon () on the upper left corner, and choose [**Tab**] to show available tab names.
2. Choose [**Preview**] to show the Preview tab.
3. Click the [**Preview**] tab to show the Preview page.
4. Load your document to the scanner and click the [**Preview**] button to get a preview image.
5. On the [Image] tab, click [Gray] or [Black and White] image mode and then choose [Custom] on the [Color Dropout] tab. A [Preview window] button will be displayed.
6. Click the [**Preview window**] button to prompt the [**Preview**] window with the previewed image.

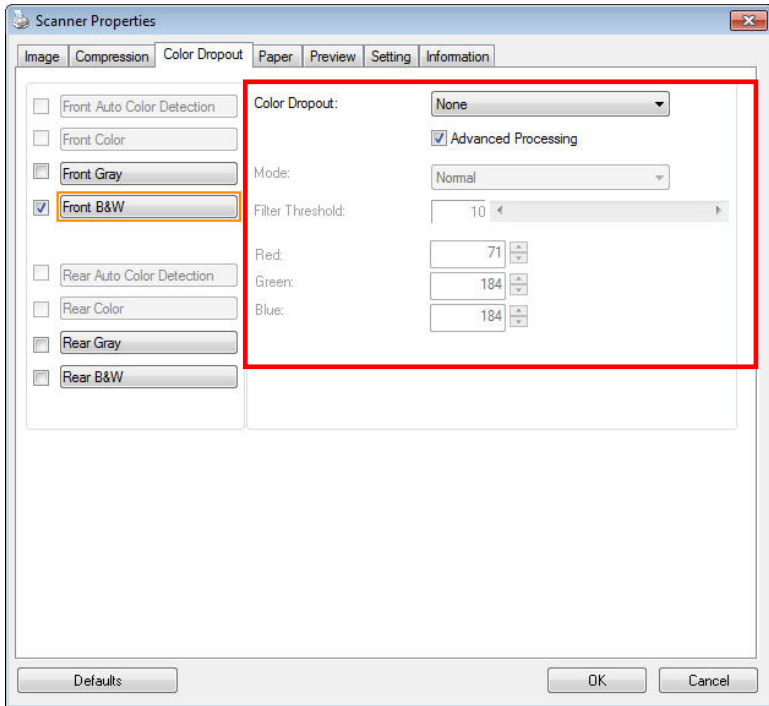
-
7. Move your cursor over the preview image. Your mouse cursor now becomes an Eyedropper.
 8. Click to select a color which you wish to remove.
 9. Click and hold your mouse button to view the result after removing the specified color. If the result is satisfactory, click [**OK**] to close the Preview window.



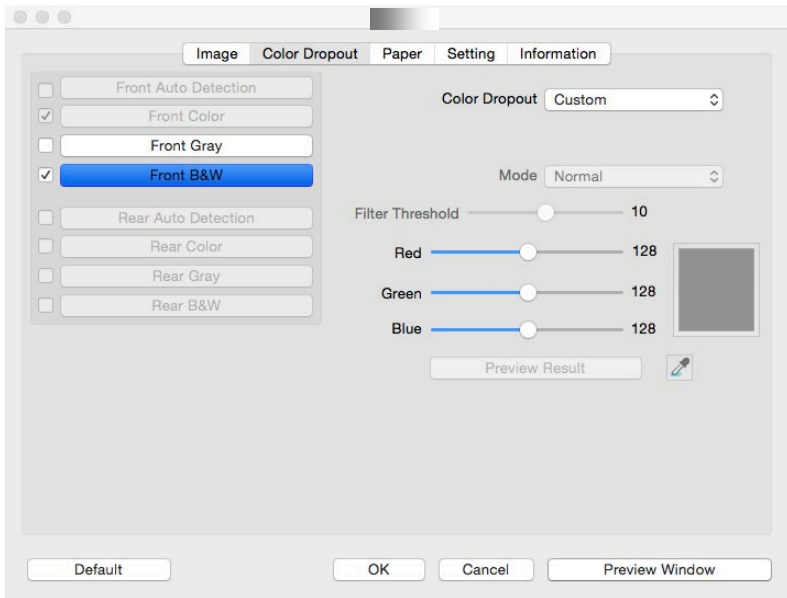
The Preview Window



The Color dropout result



The Color Dropout dialog box (Windows)

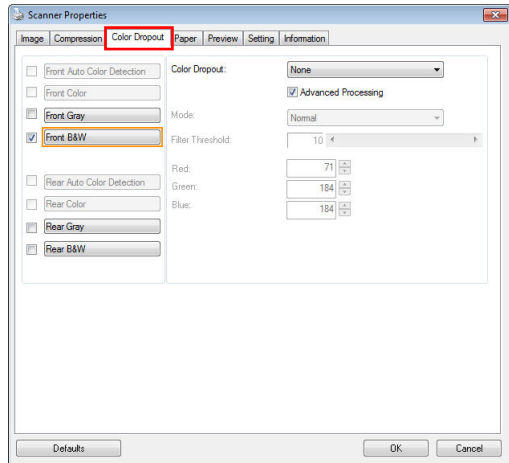


The Color Dropout dialog box (Mac OS)

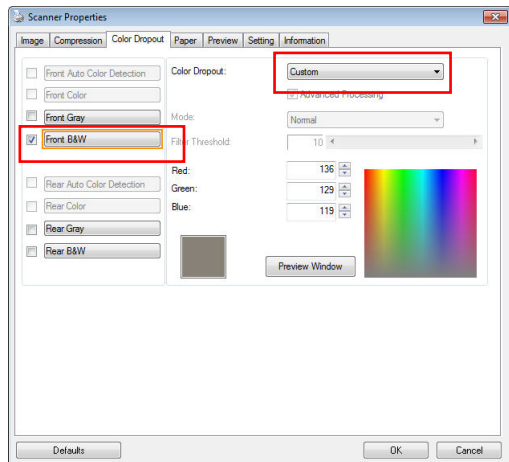
Windows:

To select a color on the Color palette,

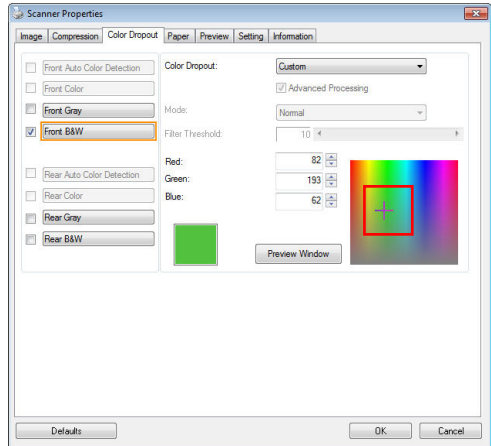
1. Click the Color Dropout tab from the Scanner Properties dialog box.



2. Choose Gray or B&W from the Image Selection box and click "Custom" from the Color Dropout drop-down menu. The Color palette appears.



-
3. Move your cursor over the palette. The cursor becomes a cross sign.

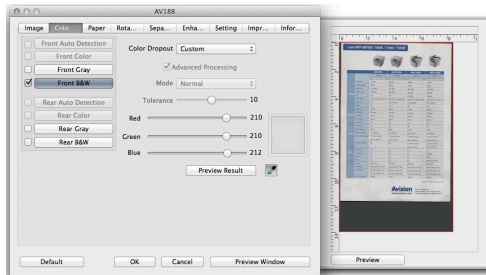


4. Click to choose a color. The RGB values are changed simultaneously.

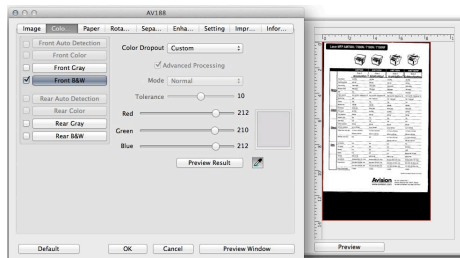
Mac OS:

To preview the color dropout result, please follow these steps:

1. Choose [**Preview Window**] to show the Preview tab.
2. Load your document to the scanner and click the [**Preview**] button to get a preview image.



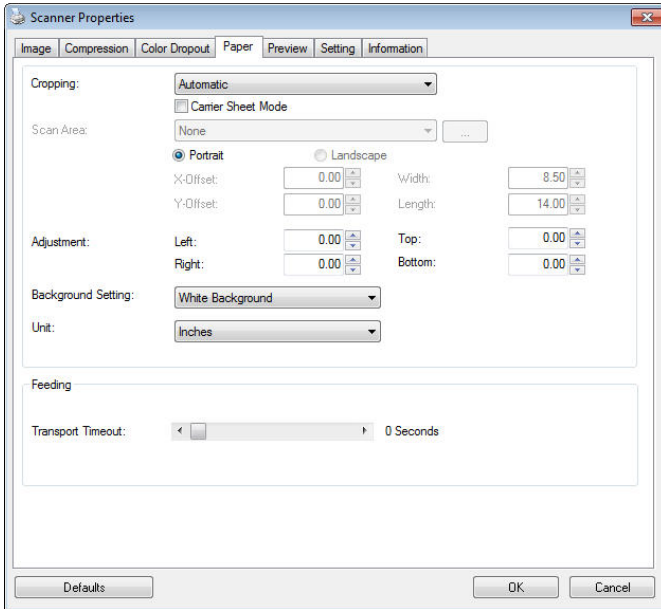
3. On the [Image] tab, click [Gray] or [Black and White] image mode and then choose [Custom] on the [Color Dropout] tab. An [Eyedropper] button will be displayed.
4. Click the [Eyedropper] button and move your cursor over the preview image. Your mouse cursor now becomes an Eyedropper.
5. Click to select a color which you wish to remove.
6. Click and hold your mouse button to view the result after removing the specified color.



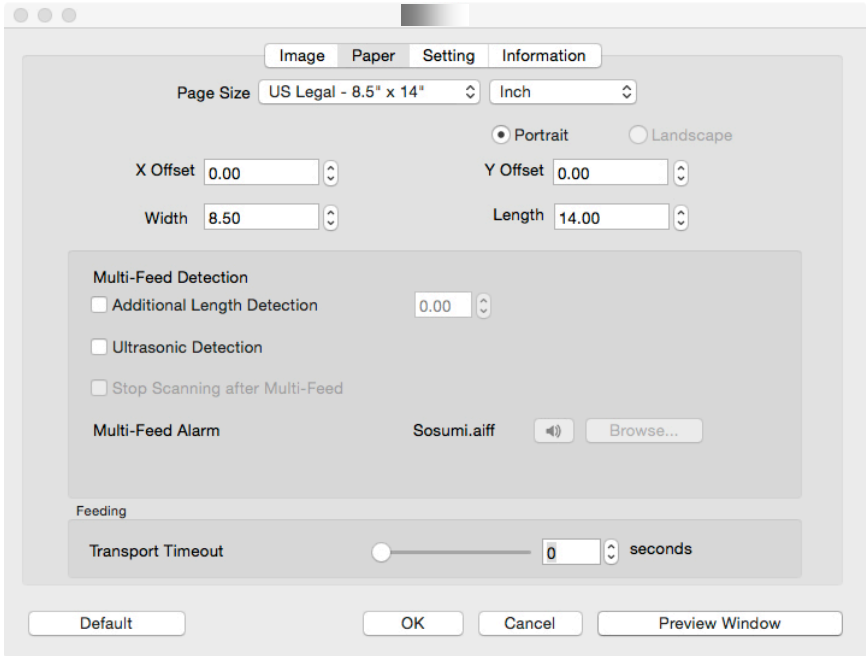
7. If the result is satisfactory, click [**OK**] to close the Avision Scanner Properties dialog box.

4.6 The Paper Tab

The Paper tab allows you to define values relating to image output (i.e., Auto Crop or not, Scan Area, OverScan, Multi-Feed Detection).



The Paper tab dialog box (Windows)



The Paper tab dialog box (Mac OS)

4.6.1 Cropping

Cropping allows you to capture a portion of the document being scanned. **Choice: Automatic, *Automatic (36"), Fixed to Transport, *EOP (End of Page) Detection, *Automatic Multiple, *Relative to Documents.**

* Windows only

OPTIONS	DESCRIPTION
Automatic	Automatic adjusts the cropping window according to different document sizes and automatically straighten a skewed document. Use this option for batches of mixed-sized documents.
Automatic (36")	Automatically adjusts the cropping window according to different document sizes smaller than 36" and automatically straighten a skewed image. Use this option for batches of mixed-sized document. Note: The availability of this feature varies due to scanner model.
Fixed to Transport	This feature allows you to define the area or zone to be imaged. Use for batches of same-sized documents. If you select this option, you can use the arrow keys to define the x and y offset values, width and length to redefine your scanned area. The Display window will show image placement as you change the values.
EOP (End of Page) Detection	This feature allows you to define the area or zone to be imaged. Use for batches of same-width but different length documents. If you select this option, you can use the arrow keys to define the x and y offset values, width and length to redefine your scanned area. The Display window will show image placement as you change the values.

Automatic Multiple

This option allows you to place various sized documents such as photos, ID Cards, or business cards on the flatbed (if available) and lets you create multiple individually cropped images in one scan. Note: To correctly create multiple images, please make sure there is at least 12mm (0.5") of space between each document.

Relative to Document

This option allows you to crop different areas on your documents and deliver these images in B&W, Gray, or Color separately. For example, there are applications which require you to store the entire document in B&W and a part of the document in color to save storage space. This is useful for documents where a photograph or signature appears in a consistent area on the document such as resumes, and so on.

The following options are only available when **Fixed to Transport** is selected.

- **X-Offset** — the distance from the left end of the scanner to the left edge of the scanning area.
- **Y-Offset** — the position from the top end of the document to the top end of the scanning area.
- **Width** — the width of the scanning area.
- **Length** — the length of the scanning area.
- **Center:** automatically calculates the x-offset for center-fed feeding based upon document size selected.



- — relocate the scan area by click the arrow key on the cross sign while retain the scan size. View the result from the Display window.

The Adjustment option is available when **Automatic** is selected.

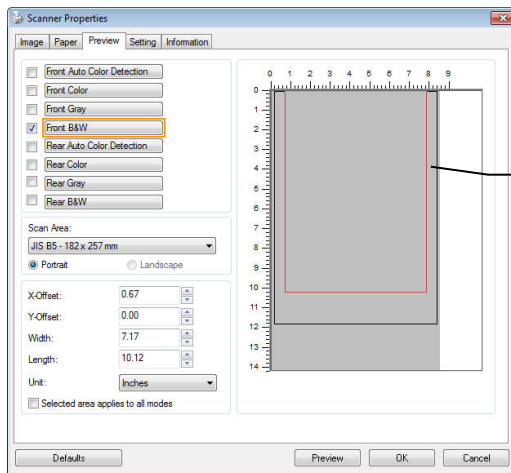
- **Adjustment** —adds a positive/negative margin value Top/Bottom or toward left/right of the image.
Adjustment is used when the automatic document feeder is used. Adjustment reduces the possibility of corner clipping on skewed images. To set Adjustment values, use the UP/Down buttons to select where you want to apply Adjustment values: Top/Bottom or Left/Right, and then select the amount of inches/mm/pixels applied. Select a value within the range of 0.00 to 1.00 / -1.00.

Relative to Document: (used for batches of same-sized documents)

This option allows you to crop different areas on your documents and deliver these images in B&W, Gray, or Color separately. For example, there are applications which require you to store the entire document in B&W and a part of the document in color to save storage space. This is useful for documents where a photograph or signature appears in a consistent area on the document such as resumes, and so on.

The following procedure describes how to reproduce the entire document in B&W and a portion of document (picture) in color.

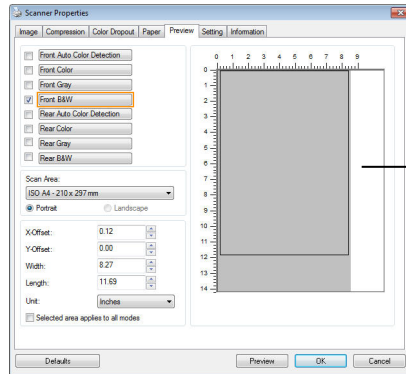
1. On the Paper tab, choose "Relative to Document" or "Fixed to Transport" from the Cropping option.
2. Choose your scan size from the Scan Area option. The selected scan size will be displayed in a red rectangular box. This is also the scan size of your entire document. (For example, ISO B5. If you have not chosen a scan area and leave the selection as None, then the default area will be the scanner's maximum.)



A red rectangular box

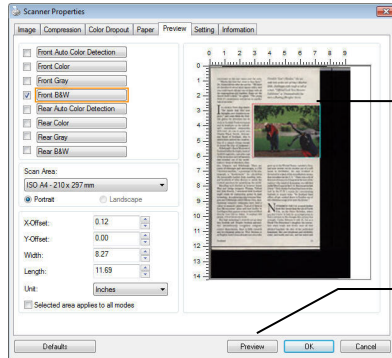
- Click the Preview tab to display the Preview window. A black rectangular box appears to indicate the max. scan size you have just selected.

The Image Selection Box



A black rectangular box

- Click the Preview button to view the entire image in low resolution to correctly crop your relative scan area.

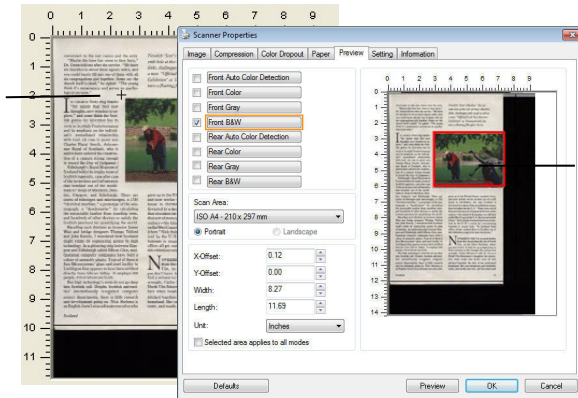


The Preview Image

The Preview Button

- Select image type from the Image Selection box. The selected image will appear in highlighted color. (For example, Front Color)
- Place your cursor on the Preview window and click your left mouse button. A cross sign will appear as illustrated. Create your relative scan size diagonally by dragging the left mouse button to your preferable size. The selected area will appear in a red box as illustrated.

A Cross Sign



The Relative Area

7. Check the B&W image from the Image Selection box to scan the entire document.
8. Click the Scan button to start scanning the document in two image types and sizes. (See the result in below.)

conversion to the rest rooms and the arts.
 "Maybe the time has come to face facts,"
 Dr. Chase said to the service. "We have
 six churches in about three square miles, and
 you could hardly fill any one of them with all
 six congregations put together. Some say the
 church itself is dead," he added. "The young
 think it's unnecessary and serves no psycho-
 logical purpose."

Finland's "Sea's Maiden," the sev-
 enth boat at the life of Lady's Medrie
 links, challenges with rough air salt as
 a man. "Official Lady's Maiden
 Exhibition" at Dronowachki fea-
 tures a floating fiberglass Nestle.

In currency Scots sing thanks
 for stinks that fled new
 thoughts, we wonder to be
 slow," and some think the Scot-
 tish spirit for invention has
 roots in Scottish Presbyterianism
 and to emphasize on the individ-
 ual's unshared relationship
 with God (it can be said was
 Charles Stuart Smyth, Astron-
 omer Royal of Scotland, who is
 said to have ordered the construc-
 tion of a camera strong enough
 to resist the Day of Judgment.)
 Edinburgh's Royal Museum of
 Scotland holds the trophy room of
 Scottish inventors, each after use
 of the inventions and refinements
 that tricked out of the world's
 makers' shops of Aberdeen, Dal-
 keith, Glasgow, and Edinburgh.



There are scores of telescopes and microscopes, a 1700
 "descriptive machine," a prototype of the ento-
 morphograph, a "dendrometer" for calculating the
 estimable lumber from standing trees, and
 hundreds of other devices to satisfy the
 Scottish penchant for quantifying the world.
 Resulting such thinkers as inventor James
 Watt and bridge designers Thomas Telford
 and John Rennie, I wondered how Scotland
 might enter its engineering genius to high
 technology in a glittering strip between Glas-
 gow and Edinburgh called Silicon Glen, multi-
 national computer companies have built a
 colony of assembly plants. Typical of them is
 Sun Microsystems' glass-and-steel facility in
 Laidlaw that appears to have been built
 directly from Silicon Valley. It employs 600
 people, 450 of whom are Scots.
 But high technology's roots do not go deep
 into Scottish soil. Despite Scottish achieve-
 ment internationally recognized computer
 science departments, there is little research
 and development going on. Nick Strathairn is
 an English-born London-born executive who

grew up in the United States, married a Scot,
 and now works via his goodson out of a mill
 house in Perthshire. He says Scotland is
 thwarted by a lack of the serendipitous money
 that circulates in the U.S. "There was a lot of
 that sort of money in Glasgow at the turn of the
 century—the kind of dynamite you still find
 on the West Coast of the U.S. Boy you overvalued
 it when it blew up." Nick thinks Scotland has been vicim-
 bered by the U.E.'s mania for concentrating
 business in major hubs. "The Scotland head
 offices all got sucked down to London out of
 this ridiculous urge to be near the base."
 N
 OWHERE TO RUN TO. It is much further
 from the throne than the life of North
 Pole, in the Outer Hebrides, where,
 you don't have to look for an acquaintance to
 find a witness to the dinner his century has
 wrought. Cathy Johnson is only 35, but as a
 North Pole fisherman's daughter she remem-
 ber when boats and ferries were all that
 linked together the idea of her grandfather
 homeland. She saw telephones and electricity
 come, and roads and cars, and hot water and



The entire document in B&W

The relative area in color

4.6.2 Other Paper Selection

Carrier Sheet Mode:

Check this option to automatically crop the scan window according to your document size when scanning non-standard document (fragile, irregular-size document) with a carrier sheet (optional). Note: The availability of this option varies due to scanner model.

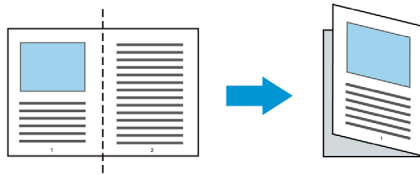
Loading Documents Using a Carrier Sheet

A Carrier Sheet is a plastic sheet specifically used for loading non-standard document onto the scanner. It allows you to scan document that can not be scanned in the regular way. Also, documents larger than A4 size, such as A3 and B4, can be scanned by folding in half, inserting into the Carrier Sheet, and scanning in duplex mode. You can also scan documents that can be damaged quite easily such as photographs, or irregular size documents that are difficult to load directly such as clippings.

To scan document using a Carrier Sheet,

For documents larger than A4/Letter size, such as A3

- a. Fold the sheet to be scanned in half.
- b. Fold the sheet tightly and smooth out crease. Otherwise, the sheet may be skewed during scanning.

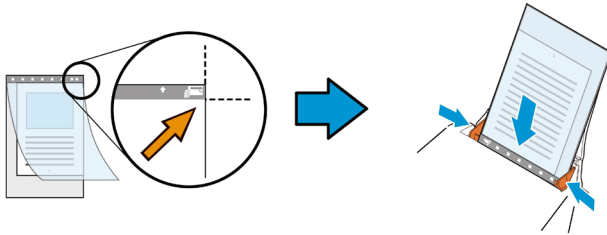


1. **Open the Carrier Sheet and place the document inside.**

Align the top of the document to the top of the Carrier Sheet (the printed area).

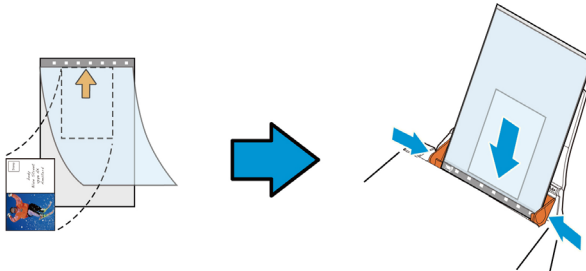
For documents larger than A4/letter size, such as A3

Align the top of the document to the top of the Carrier Sheet (the printed section) and the folded portion to the right edge of the Carrier Sheet so that the document fits into the Carrier Sheet at the upper corner.



For non-standard document

Center your document in the Carrier Sheet.



2. Load the Carrier Sheet with the gray section (printed section) facing downwards.
3. Adjust the paper guides to the width of the Carrier Sheet. Adjust the paper guides so that there is no space between the guides and the Carrier sheet. Space between the guides and Carrier Sheet may cause the Carrier Sheet to become unaligned during scanning, and skew the scanned image.
4. Start the scan.

NOTICE:



- [Carrier Sheet] is available for the models that support the Carrier Sheet.
- Some functions are disabled when [Carrier Sheet] is checked.
- This option may not work properly on some applications.

Scan Area

Choose your desired paper size with the drop-down list box. Or you may select a custom paper size by clicking the **Scan Area** box and then click **Add** to include in the choice.

Choices are listed below:

None
US Letter- 8.5" x 11"
US Legal – 8.5" x 14"
ISO A4 – 21 x 29.7 cm
ISO A5 – 14.8 x 21 cm
ISO A6 – 10.5 x 14.8cm
ISO A7 – 7.4 x 10/5 cm
ISO B5 – 17.6 x 25 cm
ISO B6 – 12.5 x 17.6 cm
ISO B7 – 8.8 x 12.5 cm
JIS B5 – 18.2 x 25.7 cm
JIS B6 – 12.8 x 18.2 cm
JIS B7 – 9.1 x 12.8 cm
Scanner Maximum
Long Page (<118")

Long Page (<118"):

When you need to scan documents whose length exceeds scanner maximum, please choose **Long Page**. Note if **Long Page** is selected, the **Multi-Feed Detection** will not be available. (Note: This option and the maximum allowable document length vary due to type of scanner.)

When **Long Page (<118")** is selected, be sure to specify your document size in the **Length** and **Width** field.

Notice when scanning long page document:

1. Pull out the extension in the ADF Paper Tray.
 2. Secure enough space around the Output Tray to prevent the ejected paper from falling off the Output Tray.
 3. To ensure the performance, in color mode, set the resolution to be 300 dpi or lower; in Black and White mode, set the resolution to be 600 dpi or lower.
 4. Depending on your system environments, application, or your specified paper size, there may be insufficient memory to perform scanning.
-

OverScan

Overscan allows you to add a specific margin at top and bottom or right and left (Options vary based on the type of scanner) of the edge of the image. This is used to reduce possible corner clipping on the skewed images and often applied to a batch of skewed document to be scanned in the auto document feeder. Select a value between 0 and +5 mm. Note the overscan result will not be shown in the Display window and that the availability of the function varies based on type of scanner.

Pre-Feed

Choice: Enable, Disable. If enable is selected, you can set the amount of time the scanner starts pre-feeding your paper after your documents has been loaded into the feeder. The default is disabled. Note: The availability of this option varies due to scanner model.

Transport Timeout

Set the amount of time the scanner will wait and then start auto scan after the first scan job is completed. If you have many separate documents need to be scanned at the same scan settings, this feature is especially useful. The default is 0. The value ranges from 0 to 30 seconds.

NOTE:

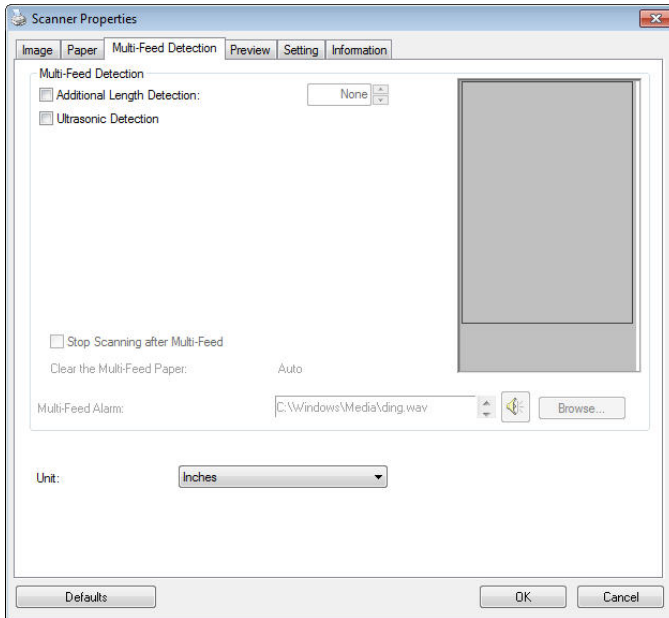


- Within the specified timeout period, if you load your document to the feeder, the scanner starts scanning automatically.
- If your scanner has a flatbed option and you place your paper on the flatbed, after the timeout period, you need to click the Scan button on the TWAIN user interface to start scanning.

4.7 The Multi-Feed Detection Tab

Multi-Feed Detection

Multi-Feed Detection allows you to detect overlapped document that go through the auto document feeder. Multi-Feed usually occurs due to stapled documents, adhesives on documents, or electro-statically charged document. Note : The availability of the function varies based on type of scanner.



Additional Length Detection

Additional Length Detection allows you to define the length of document being multi-fed. This value indicates the additional length exceeding your scan area. The Display window will show the size of the document as you change the value. A value of 0 indicates no additional length detection. The Additional Length Detection is best used when scanning same-size documents in the auto document feeder.

Ultrasonic Detection

Ultrasonic Detection allows you to set overlapped document by detecting paper thickness between documents. Note : The availability of the function varies based on type of scanner.

There are two options available if Multi-Feed is detected.

- **Stop Scanning after Multi-Feed**

- If this is selected, the scanner will stop the feeder and prompt a multi-feed warning message. In addition, the multi-feed paper will be ejected from the scanner automatically.

Note: The availability of the [Auto Clear Multi-Feed Paper] feature varies based on scanner type. If your scanner does not support this feature, remove the multi-feed paper manually.

- If this is not selected, the scanner will continue scanning the entire document though multi-feed is detected. After the entire document has been scanned, a multi-feed dialog box will be prompted to indicate the page number which has been detected multi-feed and need to be rescanned.

- **Multi-Feed Alarm**

If a wave file is added, the scanner will make a sound alarm if multi-feed is detected yet no Warning dialog box will be displayed.

How to add the sound alarm :

1. Click the Browse button on the right side of the speaker icon. The Open dialog box appears.
2. Choose your wave file.
3. Click the Open button. The wave file is added.

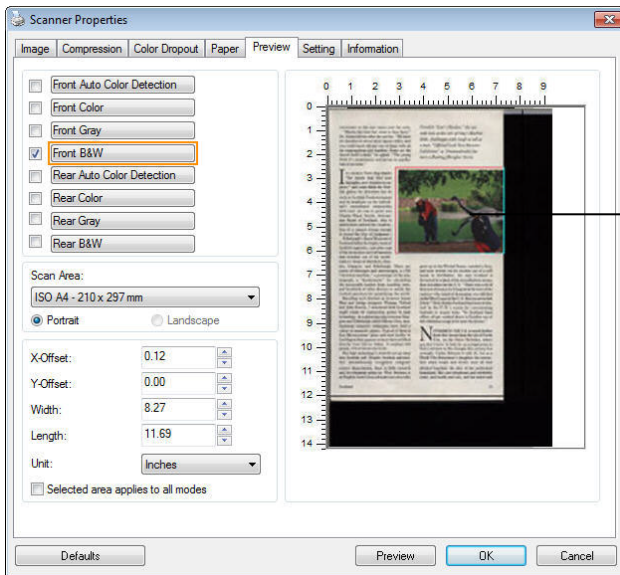
Units

Defines the primary measurement system. **Inches**, **Millimeters**, and **Pixels** are available.

4.8 The Preview Tab

The Preview tab allows you to preview (a low-resolution scan) your image before final scan. This preview image lets you allocate your scan area. You can choose your scan area by the "Scan Area" drop down list box or placing your cursor on the Display window and dragging it diagonally on the Display window. Then, a red rectangle box will appear to indicate the selected area.

Note: If you choose "Automatic Cropping" on the "Paper Tab", then to select a scan area on the Preview tab is not allowed.

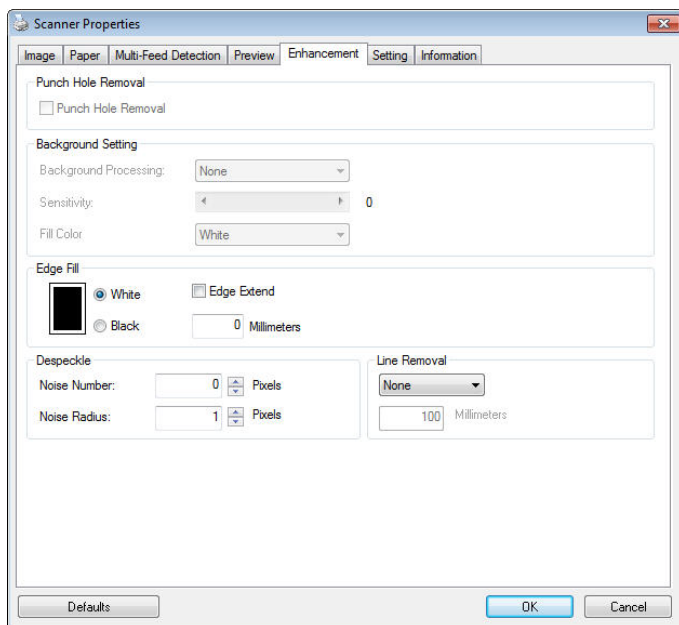


The Display Window

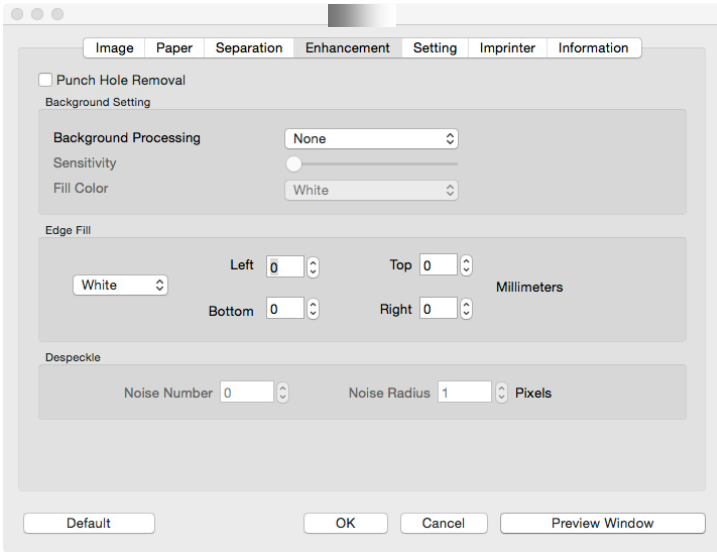
The Preview Tab (Windows)

4.9 The Enhancement Tab

The Enhancement tab allows you to set following additional image processing settings.



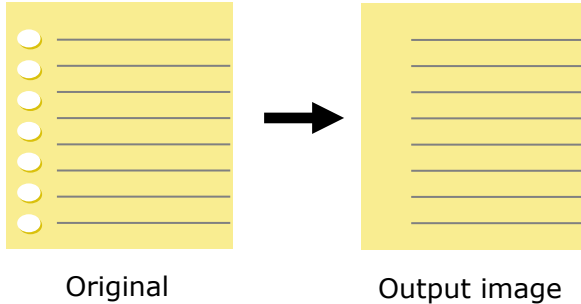
The Enhancement tab dialog box (Windows)



The Enhancement tab dialog box (Mac OS)

**Punch
Hole
Removal**

You can remove punch holes from the output scanned image when scanning punched document. Note the availability of this feature varies depending on your scanner model.

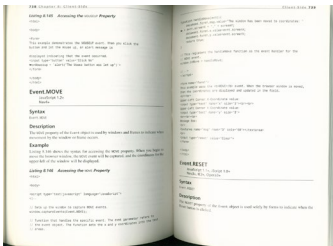


Punch holes can not be removed when:

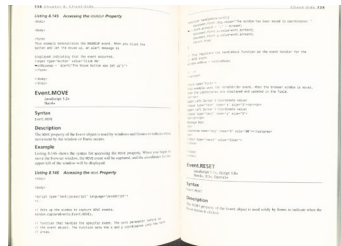
- Resolution is set lower than 150dpi
- The hole is near the edge of the document
- The holes are not aligned along the edge of the document
- Punch Hole Removal is available only when "Auto Crop" is enabled. If either "Fixed to Transport", "EOP (End of Page) Detection", "Automatic Multiple", "Relative to Documents" is selected from the Cropping option on the Paper tab, the Punch Hole Removal option will be disabled.

Shadow Removal

When 「Flatbed」 on the 「Scan Source」 option is selected on the 「Image」 tab, the 「Shadow Removal」 option will be enabled. Click to remove the shadow on the book spine when scanning a book.



Before Shadow Removal



After Shadow Removal

Background Processing: The [**Background Processing**] option allows you to smooth background color or remove it to make image clearer. The option is especially useful for documents with color forms such as invoices.

Choices: None (default), Smooth, Removal

- **None** - no background processing will be performed (default)
- **Smooth** - produces images with a more uniform background color. This option improves image quality.
- **Removal** - identifies the background color and then removes it.

Sensitivity: Choice: 0, 1, 2, 3, 4. Default: 0

- The higher the value, the more background color will be kept.

Mode: Auto, Moiré

If [**Smooth**] is selected in the [**Background Processing**] option, then the choices for the [**Mode**] option includes Auto, and Moiré.

- **Auto** - uses the factory preprogrammed mode to proceed background smoothing.
- **Moiré** - Remove the moiré patterns that appear on the background of the image when scanning printed material.

If [**Removal**] is selected in the [**Background Processing**] option, then the [**Mode**] option will be replaced with [**Fill Color**]. Choices: White, Auto.

- **White** - identifies the background color and substitutes it with white.
- **Auto** - identifies the background color and substitutes it with the color of the largest background zone.

Background Processing: None

Background Processing: Smooth

**Background Processing: Removal
Fill Color: White**



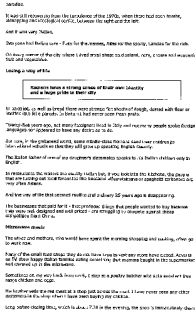
NOTE:

Background color in small zone will not be processed or removed.

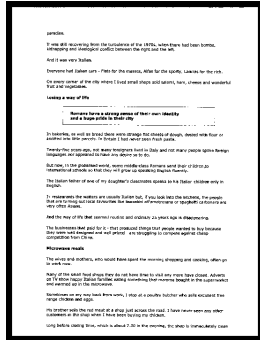
Edge Fill

Check White or Black if you wish to add white or black edge on the border of your scanned image. Enter the value from 0 to 5 mm. Default value is 0.

Original



Edge Fill: 5mm (Black)



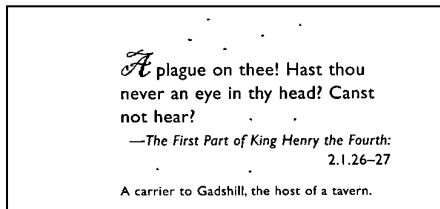
If you want to add a white or black frame on the edges of the scanned image, check "Edge Extension".

The default value is 0. The maximum value is half of the short side of the selected scan area. For example, if you choose an A4 size (8.26 "X11.69"), then the maximum value of the white or black box is 4.14" (half of "8.26").

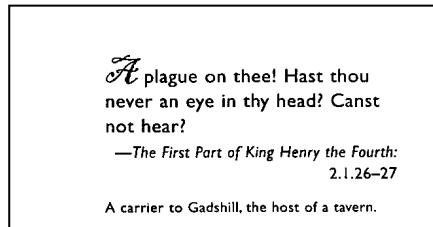
Despeckle

Occasionally small dots or specks appear in the background of a scanned image. Remove unwanted speckles provides a cleaner image for OCR (Optical Character Recognition) processing, and also helps to reduce compressed file size.

Define the speckles (also known as image noise) you wish to remove by specifying its number (size) and radius (range). The measuring unit is pixel. The higher the number, the more speckles will be removed.



Before Despeckle
(noise number:0, noise radius:1)



After Despeckle
(noise number:22, noise radius:10)

NOTE:



- The function is currently available for Black and White image only.
- To scan at rated speed, it is recommended to set the noise radius up to 10 pixels.

Line Removal: When **Black and White** image mode is selected on the [**Image**] tab, the [**Line Removal**] option will be enabled. Line Removal erases lines on the image and then reconstructs characters so the OCR (Optical Character Recognition) accuracy can be improved.

Choices: None, Form, Horizontal, Vertical

None – the default mode which does not remove any line.

Form – remove any form in the document.

Horizontal – select [**Horizontal**] and then enter the length of horizontal line to remove only the horizontal line exceeding your specified length.

Vertical – select [**Vertical**] and then enter the length of vertical line to remove only the vertical line exceeding your specified length.

Attn: Mr. David Wang

Shipped by SST Technologies Inc. For U-Line Express

Sailing on or about July 30, 2002 From Taiwan, R.O.C. to U.S.A.

L/C No. Contract No. A1233

Marks & Nos.	Description of Goods	Quantity	Unit Price	Amount
ABC	Amount (Item No. 100)	3 sets	USD20.00	USD60.00
	Amount (Item No. 101)	3 sets	USD20.00	USD60.00
	Amount (Item No. 102)	3 sets	USD20.00	USD60.00
Seattle P/O No. A1233 C/O No. 1 Made in Taiwan, R.O.C.				
Total		5 sets		USD120.00

None

Attn: Mr. David Wang

Shipped by SST Technologies Inc. For U-Line Express

Sailing on or about July 30, 2002 From Taiwan, R.O.C. to U.S.A.

L/C No. Contract No. A1233

Marks & Nos.	Description of Goods	Quantity	Unit Price	Amount
ABC	Amount (Item No. 100)	3 sets	USD20.00	USD60.00
	Amount (Item No. 101)	3 sets	USD20.00	USD60.00
	Amount (Item No. 102)	3 sets	USD20.00	USD60.00
Seattle P/O No. A1233 C/O No. 1 Made in Taiwan, R.O.C.				
Total		5 sets		USD120.00

Remove Form

Attn: Mr. David Wang

Shipped by SST Technologies Inc. For U-Line Express

Sailing on or about July 30, 2002 From Taiwan, R.O.C. to U.S.A.

L/C No. Contract No. A1233

Marks & Nos.	Description of Goods	Quantity	Unit Price	Amount
ABC	Amount (Item No. 100)	3 sets	USD20.00	USD60.00
	Amount (Item No. 101)	3 sets	USD20.00	USD60.00
	Amount (Item No. 102)	3 sets	USD20.00	USD60.00
Seattle P/O No. A1233 C/O No. 1 Made in Taiwan, R.O.C.				
Total		5 sets		USD120.00

**Remove Horizontal Line
(over 30 mm)**

Attn: Mr. David Wang

Shipped by SST Technologies Inc. For U-Line Express

Sailing on or about July 30, 2002 From Taiwan, R.O.C. to U.S.A.

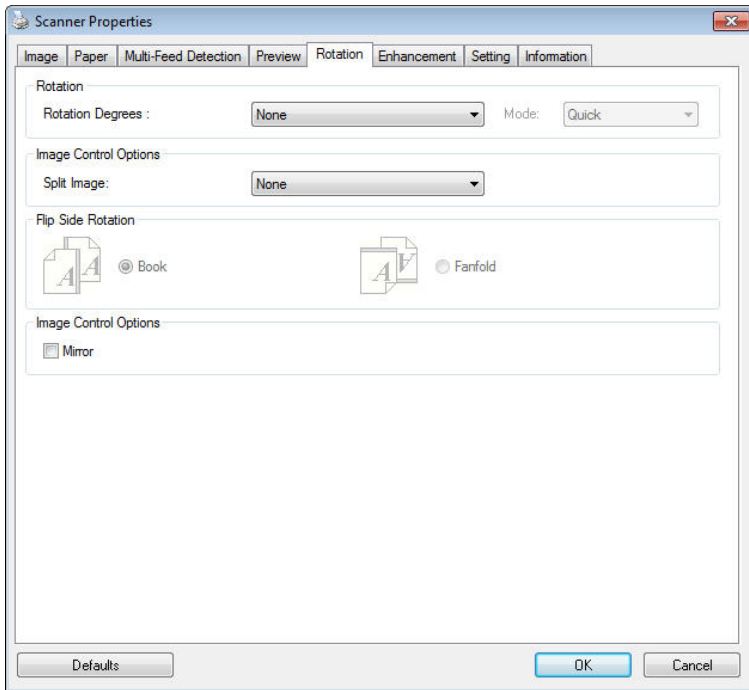
L/C No. Contract No. A1233

Marks & Nos.	Description of Goods	Quantity	Unit Price	Amount
ABC	Amount (Item No. 100)	3 sets	USD20.00	USD60.00
	Amount (Item No. 101)	3 sets	USD20.00	USD60.00
	Amount (Item No. 102)	3 sets	USD20.00	USD60.00
Seattle P/O No. A1233 C/O No. 1 Made in Taiwan, R.O.C.				
Total		5 sets		USD120.00

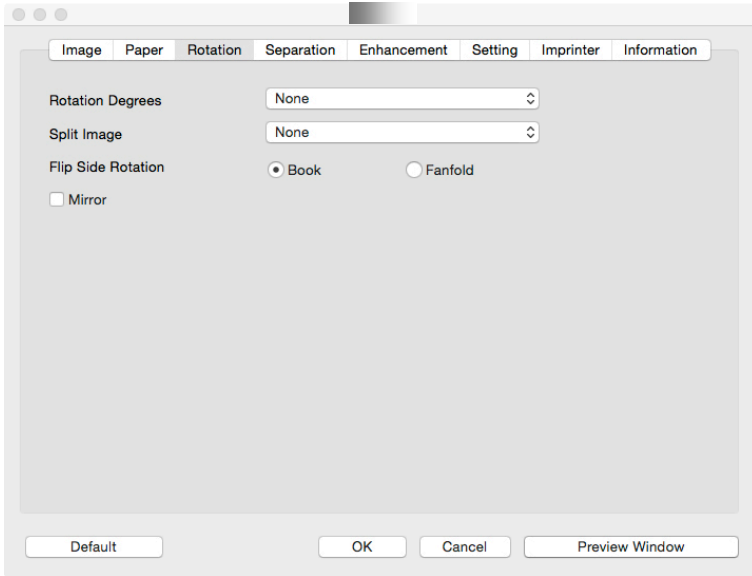
**Remove Vertical Line
(over 70 mm)**

4.10 The Rotation Tab

The Rotation tab allows you to set the following image rotating options:



The Rotation Tab (Windows)



The Rotation Tab (Mac OS)

Rotate Image

Choose the rotation angle from the drop down list if you wish to rotate your scanned image.

Choice: None, 90°CW(clockwise), 90°CCW(counter clockwise), 180°, Auto based on contents. Auto rotate every even page.

1 2 3

Original

1
2
3

Rotate 90°CW

1
2
3

Rotate 90°CCW

1 2 3

Rotate 180°

Auto based on contents: Automatically rotate images based on the contents of document. When 「**Auto based on contents**」 is selected, its modes will be enabled to let you select more options.

Mode: Quick, Full Text, Complexity

Quick – the default mode to let you rotate images at the fastest speed.

Full Text – the enhanced mode for documents with mixed text orientation.

Complexity – the enhanced mode yet at the slowest speed for document with complex image or text orientation.

Auto rotate every even page:

Automatically rotate 180° on every even page. This is especially useful when you scan the inside pages from a book. As a result, if you choose "Flatbed (book)" from the "Scan Source" option, "auto rotate every even page" will be selected as default.

Note: This option varies based on type of scanner.



Document with various text orientations



Document with dark or complex background

Split Image

By splitting an image, two separate images are created horizontally or vertically. This is useful for documents containing two pages per image when you want to save them as two images (one page for one image). **Choice: None, Horizontal, Vertical.** Default is None.

Horizontal: Divide one image into the upper half and the lower half.

Vertical: Divide one image into the left half and the right half.



Split Horizontally



Split Vertically

**Image
Control
Option**

Check the Mirror box if you wish to reverse the right and left side of your image.



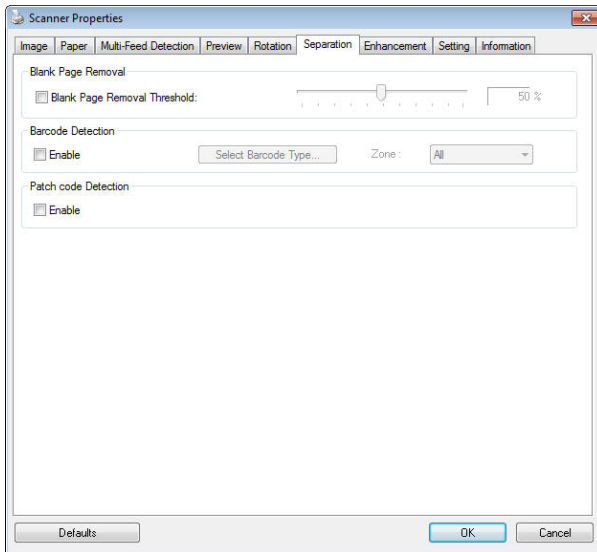
Original



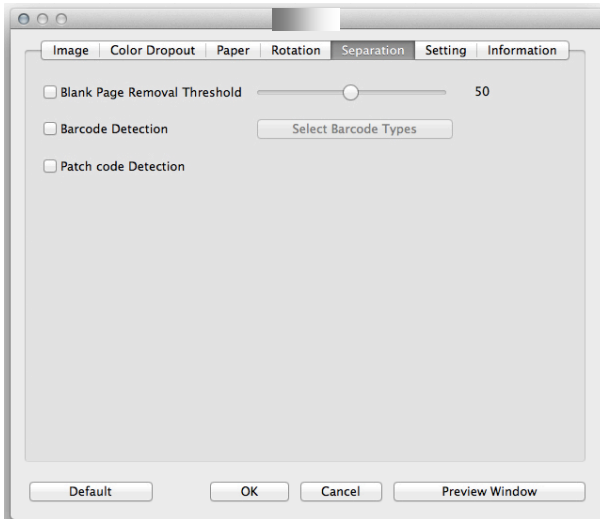
The Mirror Effect

4.11 The Separation Tab

The Separation tab allows you to enable the detection engine to detect the blank page, barcode, and patch code and then notify the software application which supports document separation to separate your multi-page documents. Choices: Blank Page Removal, Barcode Detection, Patch Code Detection.



The Separation Tab (Windows)



The Separation Tab (Mac OS)

Blank Page Removal

Choices: None, Blank Page Removal Threshold, Image Size.

None – Do not remove the blank pages.

Threshold - Move the slider to the left or right to define your threshold for the blank page.

Image Size – Range: 1~ 10000 KB. Specify your desired image size to detect the page as a blank page. For example, if 3 KB is selected, any page less than 3 KB will be recognized as blank page.

When the bar code has been detected successfully, a file [avbarcode.ini] will be created and stored in the following path (Windows):

[Windows 7, Windows 8, Windows 10:](#)

C:\ProgramData\%PRODUCTNAME%

Barcode Detection:

Check [**Enable**] to detect barcode and notify the software application for advanced processing. Please note the whole document will be checked and no specific detection area needs to be designated.

Barcode Types:

The following barcode types can be detected.

Two-dimensional codes

- Aztec
- DataMatrix
- PDF417
- QR Code

One-dimensional barcodes:

- Code 39
- Code 93
- Code 128
- EAN-8
- EAN-13
- UPC-A
- UPC-E
- Codabar
- GS1 DataBar
- MaxiCode

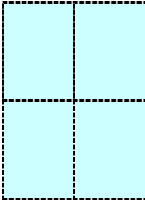
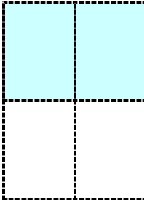

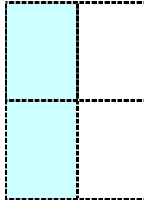
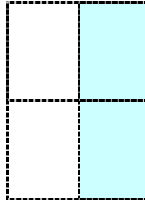
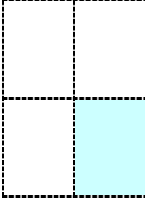
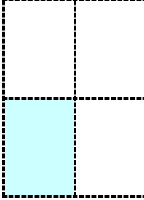
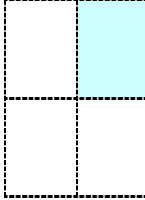
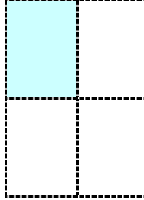
Barcode Zone:

Specify the barcode zone to be detected.

Select 「**All**」 to checks the whole document and detects barcodes. Or you may speed up the process by specifying a detection area since only the specified area is checked.

Choice: All, Top, Bottom, Left, Right, Bottom Right, Bottom Left, Top Right, Top Left

Choice for barcode zone on a page:

				
All	Top	Bottom	Left	Right
				
Bottom Right	Bottom Left	Top Right	Top Left	

NOTE:



- Recommended resolution: 200~600 dpi for regular barcode, 300~600 dpi for QR code.
- Skewed barcodes may not be recognized correctly.
- Using the same sheet repeatedly may decrease the recognition accuracy due to accumulated dirt on the sheets. If the sheet is not recognized correctly or gets smudged, replace it with a new sheet.

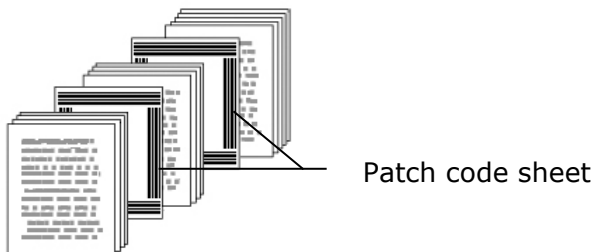
Patch code Detection:

Check [**Enable**] to detect patch codes and notify the software application for advanced processing.

A patch code is a pattern of parallel, alternating black bars and spaces (i.e. a barcode) that is printed on a document. Patch code sheet is most commonly used as a document separator in a stack of document.

You can find various sizes of patch codes (PDF) by choosing [Start] menu>[All Programs]>[Avision Scanner Series]>[Patch code] in succession.

Simply print the PDF file to produce the patch code sheet. Insert the patch code sheets to wherever you want the file to separate.



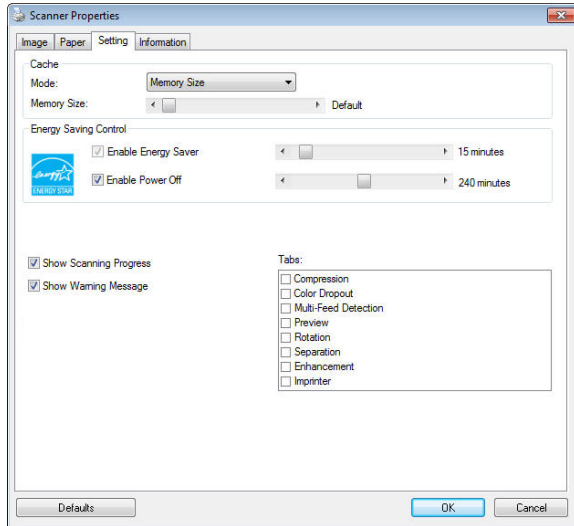
NOTES TO PRINT THE PATCH CODES:



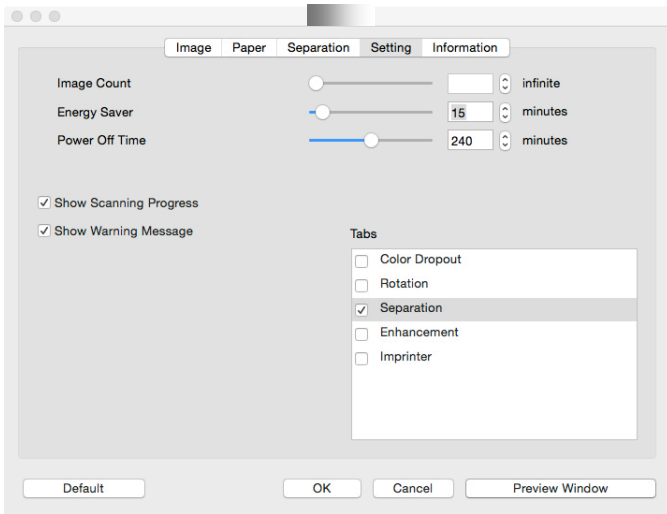
- Use blank white paper.
- Set the scaling to 100%. The sheet is not recognized correctly when printed in a size smaller than the original.
- Do not use toner saving mode. The sheet is not recognized correctly when the print is too light.
- Do not use thin paper in order to avoid bleed-through from the back.
- When you copy a patch code sheet that you printed out, make sure to copy by the same size and brightness as the original copy.
- Use the same sheet repeatedly may decrease the recognition accuracy due to accumulated dirt on the sheets. If the sheet is not recognized correctly or gets smudged, replace it with a new sheet.

4.12 The Setting Tab

The Setting tab allows you to set the following settings:



The Setting tab dialog box (Windows)



The Setting tab dialog box (Mac OS)

Energy Saving Control

Check the **Enable Energy Saver** box and move the slider to set the amount of time to start the energy saver after your last action. The range is from 1 to 60 minutes.

Enable Power Off

Check the **Enable Power Off** box and move the slider to set the amount of time to automatically turn off the scanner after your last action. The range is from 1 to 480 minutes. The default is 240 minutes (4 hours). Note the value of "Power Off" has to be greater than or equal to the value of "Energy Saving".

Cache**Mode: None, Page Number, Memory Size.**

This option allows you to assign a specified memory size from the available RAM to process the image data. By specifying a smaller memory size, you can free more memory for other applications you are running. By specifying a larger memory size, you can have more memory to process the image data especially when you have a large amount of documents needed to be scanned.

You can also specify your memory size by the page number. For your information, an A4 color document scanning at 300 dpi consumes approximates 24MB.

Image Count

When the selected cache mode is "none", the image count option allows you to assign number of pages you need to scan. For example, if you wish to scan the first two pages, simply move the page slider to 2, and the scan action will be stopped when the scanning of the first two pages have been completed.

Show Scanning Progress

Check and the scanning progress bar will be shown during scanning.

Show Warning Message

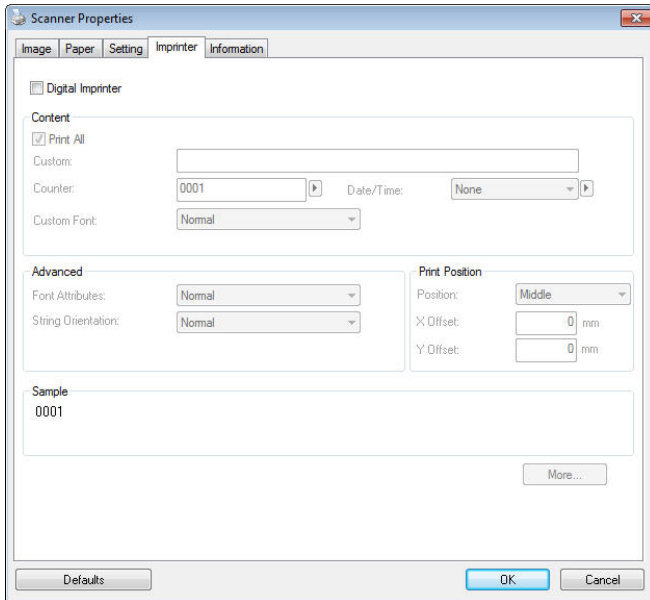
Check to show the warning messages such as "ADF pad count exceeds 50,000 scans (the number varies based on type of scanner). Please replace the ADF pad and reset the pad count."

Save Settings after Closing

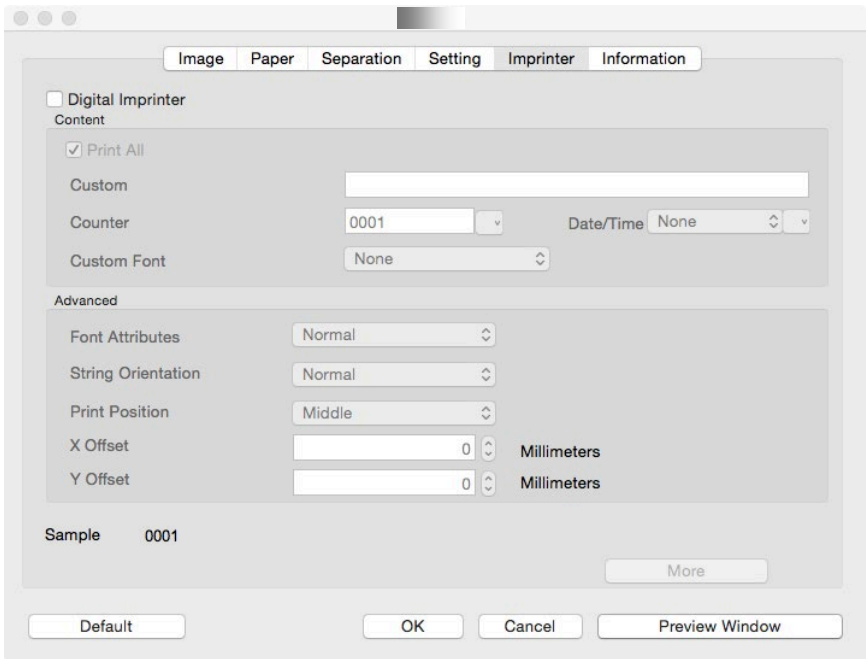
Check to save your scanner properties settings after leaving the dialog box. Next time when you open the Scanner Properties dialog box, the previously saved settings will be shown.

4.13 The Imprinter Tab

The Imprinter tab allows you to print alphanumeric characters, date, time, document count and custom message on your scanned image if digital imprinter is selected or at the back of your document if external imprinter is selected.



The Imprinter Dialog Box (Windows)



The Imprinter Dialog Box (Mac OS)

Choice: External Imprinter, Digital Imprinter. If you have installed an external imprinter, choose external imprinter. If you do not have an imprinter, choose digital imprinter. Note External Imprinter provides a vertical and rear-side print capability while digital printer provides a horizontal and front-side print capability.

Contents

Print All	Check Print All to automatically print the text at all pages of your documents. Uncheck Print All to print the text for the first page of your documents only.
Custom	Enter your custom text to be included in your print string.
Counter	Show the document count for the scan session. This value is increased sequentially by the scanner.
Date/Time	Choose if you wish to include the date and time in your print string. Format: YYYYMMDDHHSS For example, 20090402170645-check0001 indicates year, month, date, hour, seconds, your custom text and the counter.
Custom Font	Choose your desired font. Choice: Normal, Fixed Width Fixed Width (Mono spaced) fonts have a fixed character spacing. So each character occupies the same width.

Advanced

Font Attributes	Choose your font attributes. Choice: Normal, Underline, Double, and Bold.
------------------------	----------------------------------------------------------------------------------

String Orientation

Choose your string orientation.
Choice: Normal, Rotated, Vertical, Vertical Inversion, 90 degrees CW, 90 degrees CCW

2010abc

Normal

2010abc

Rotated

2010abc

Vertical

2010abc

Vertical Inversion

2010abc

90 degrees CW

2010abc

90 degrees CCW

If you check the digital imprinter to stamp text on your scanned image, the illustration of normal and rotated string is shown below:

2010abc

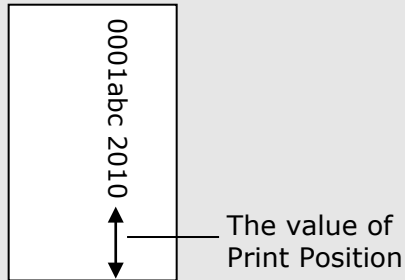
Normal

2010abc

Rotated

Print Position

Choose the position you wish to print your string. Move the slider to the right to increase the value or to the left to decrease the value. Range: 0~355mm, default:0 mm
The value indicates the height from the bottom of your paper to the last letter of your string. This option is available only if an external imprinter is installed.

**Print Position (for digital imprinter)**

Choose the position of your printed string. **Choice: Top, Middle, Bottom, Custom.** If Custom is selected, enter the X and Y offset value to specify the position.

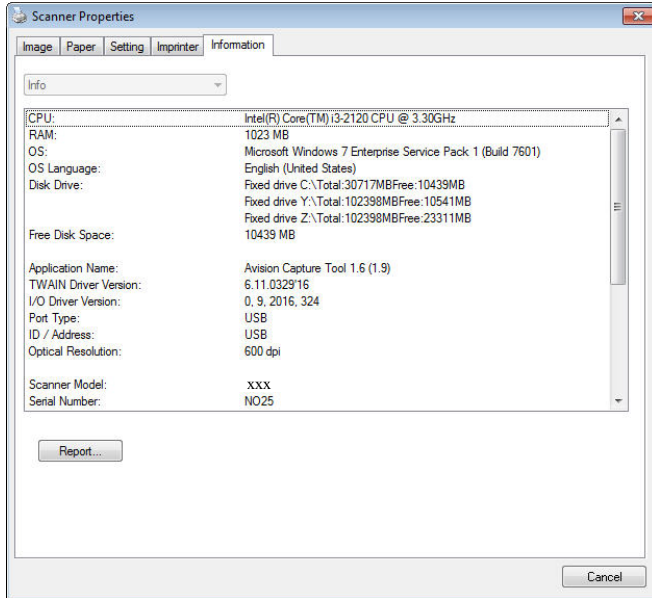
More: Click the [More] button to display more font options. This option is available for digital imprinter (stamp text on your scanned image) only. This function is not available on some models.

Font size: Move the slider to change the font size from 1 to 10. **Density:** Move the slider to change the source density from 0 to 255. The selected density will appear at the same time.

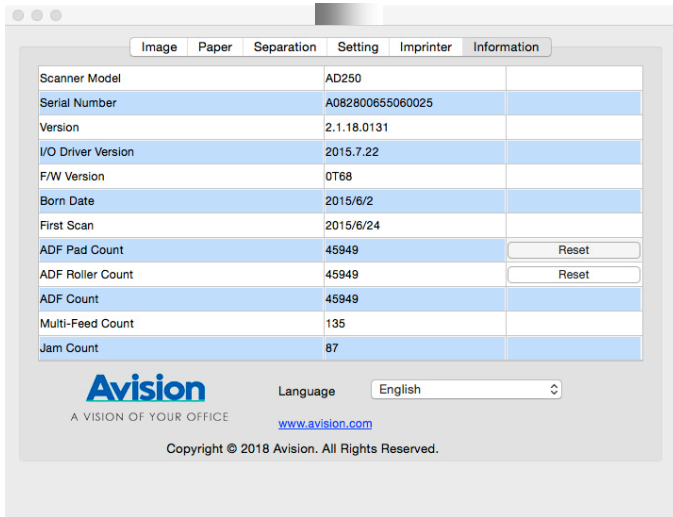
Transparency: Move the slider to choose an appropriate transparency value from 0% (not transparent) to 100% (completely transparent) so that your text can be partially transparent and you can see the background image.

4.14 The Information Tab

The Information tab displays the following system and scanner information.



The Information tab dialog box (Windows)



The Information tab dialog box (Windows)

The "Report" button : (Windows only)

If you encounter any error message while using the scanner, click the Report button. A report.txt file [[Windows XP](#): C:\Documents and Settings\All Users\Application Data\%PRODUCTNAME%; [Vista, Windows 7, Windows 8, Windows 10](#): C:\ProgramData\%PRODUCTNAME% (C: system drive)] will be generated. Please send this file to the nearest service center for trouble shooting.

The "Reset Roller Count" button :

After scanning over a recommended number of pages (refer to subsequent section 7.4 Replacing the ADF Roller) through the ADF, the ADF roller may be worn out and you may experience problems with document feeding. In this case, it is highly recommended to replace the ADF roller with a new one. (Note the replacement of the ADF roller has to be performed only by authorized service center. Therefore, please return your scanner for roller replacement.) After replacing the ADF roller, click the "**Reset Roller Count**" button to reset the roller count.



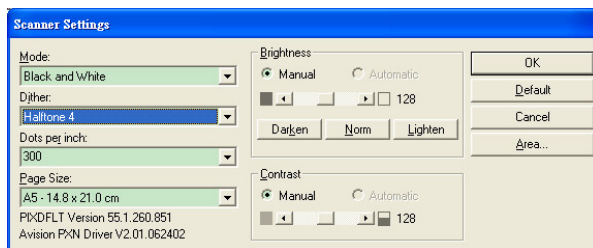
NOTE:

The lifetime and the replacing procedure vary based on type of scanner.

5. ISIS Interface Operation

* Please refer to the preceding chapter, Scanner Installation, to install ISIS scanner driver. You may start your ISIS-compliant software application to scan via the ISIS user interface.

The ISIS driver operation method is similar to the TWAIN's. Every function on the ISIS interface screen is briefly described as below:



Mode: Select one of scan modes, including B&W, gray, color options.

Dither: 5 halftone levels available, can be disabled.

Dots per inch: Select your desired resolution.

Paper Size: Select your desired paper size.

Brightness: Adjust your scan image brightness or darkness.

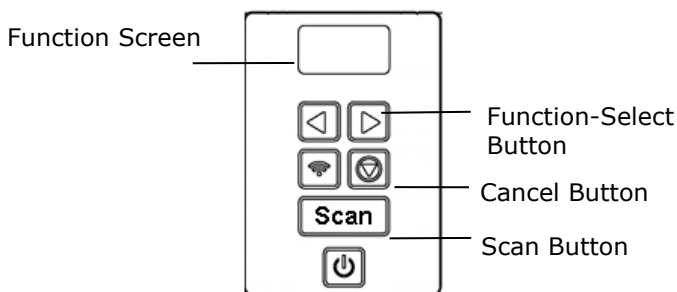
Contrast: Adjust the range between the darkest and the lightest shades in the image.

Default: Click to reset all settings.

Area: Select your desired scan area or position.

6. Using the Buttons

The following picture shows the 4 buttons and 1 function screen on the scanner.



6.1 Installing Button Manager V2

Button Manager V2 provides you an easy way to scan your document and then link the scanned image to your designated software application. All this can be done by a simple touch of the button on the scanner. Yet, before you scan, it is recommended to check the button configurations first to ensure a proper file format and a destination application.

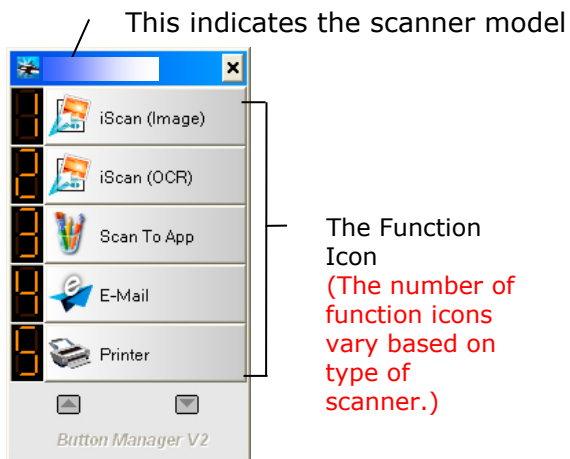
*** The application is only available in Windows.**

6.2 Checking the Button Configurations before Scanning

1. Button Manager V2 runs from the system tray. After Button Manager V2 and the scanner driver are properly installed, Button Manager V2 is started and the Button icon will be displayed on the system tray at the bottom right corner of your computer screen.

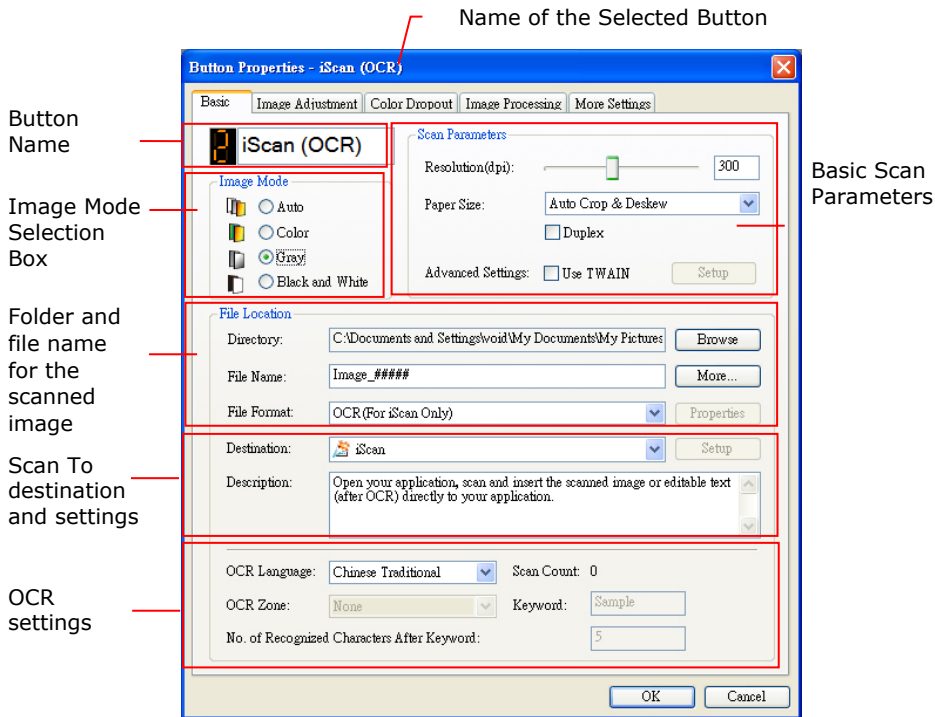


2. Left-click the Button Manager V2 icon to prompt the following Button Panel.



The Button Panel

- The Button Panel shows the first five scanning buttons. Right-click the button (function) you wish to check. The Button Properties window appears.

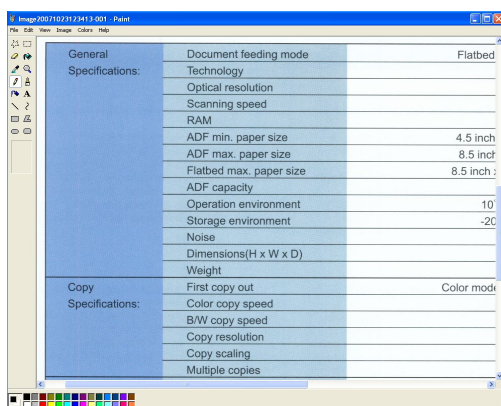


If you wish to change the setting, use this window to reset the setting for the file format, destination application, or other scan settings.

- Click the OK button to leave the window.

6.3 Scanning From One Touch of the Buttons

1. Adjust the paper guide for the width of paper and load the document with their tops into the automatic document feeder.
2. Check the button name on the LCD screen to ensure if you are selecting the proper scan settings and destination application. (For example, if you wish to scan with Button, "Scan to App", which opens Microsoft Paint and displays the scanned image in the window of Microsoft Paint, the LCD screen should show "Scan to App").
3. Press the **Scan** button on the scanner.
4. After the scanning is finished, the Microsoft Paint software will be launched and the scanned image appears in the main window of Microsoft Paint as below.



NOTE:



For details information on how to use the Button Manager V2, please refer to the user's manual in the supplied CD.

7. Starting a Scan from Your Mobile Device

With a built-in Wi-Fi module, the scanner can be converted into a wireless device. When a mobile device is use, the scanned images can be received from the mobile device.

*Wired (Ethernet) and Wireless (Wi-Fi) Networks:

The availability of these features varies according to your scanner model.

7.1 Making Preparation

To connect the scanner to a wireless LAN, prepare the followings:

- **An environment in which a wireless LAN is available**

When connecting the scanner to a wireless LAN, you may need information for a wireless access point such as an SSID (network name) and a security key (password). For details, contact your Network Administrator or refer to the manual for the wireless access point.

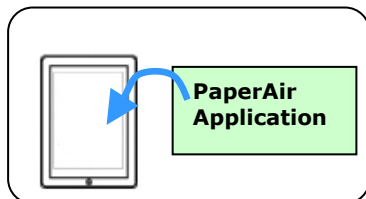


Attention!

Do not place obstacles that block radio waves (e.g. walls or metal plates) or devices that cause radio wave interference (e.g. cordless phones) within 100 mm of the scanner, or near your wireless access point.

- **PaperAir Application**

Download the **MB Application** on your mobile device from an application store such as Google Play.



7.2 Connecting to a wireless network

7.2.1 Connect to a Wi-Fi network in an AP (Access Point) mode

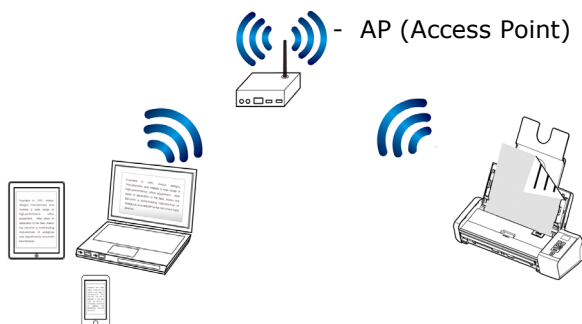
In AP (Access Point) mode, your mobile devices and the scanner are connected wirelessly without an additional AP (Access Point) since the scanner itself works as an AP.



1. Press the Wi-Fi button to turn on Wi-Fi. If the connection is successful, the blue Wi-Fi LED light will be flashing.
2. On your mobile devices, make sure Avison-xxxx (xxxx indicates the last four digits of the Mac Address at the back of the scanner) has been selected as your network name (SSID).

7.2.2 Connect the scanner to a Wi-Fi network in a client mode (default mode)

In a Client mode, your mobile devices and scanner are connected wirelessly through an additional AP (Access Point). This mode is also the default wireless mode.

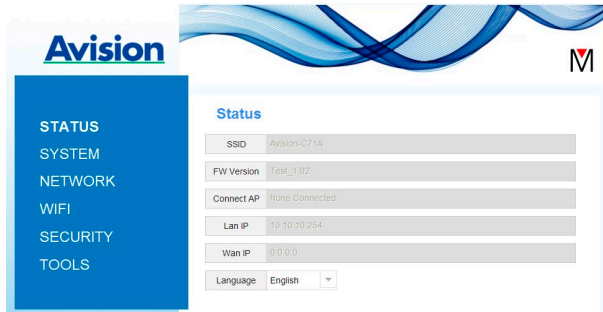


Connect Your Scanner to an Access Point:

Important:

Note To connect the scanner in a wireless network, please first disconnect the Ethernet cable connecting to your scanner.

- Press the Wi-Fi button on the scanner to turn on Wi-Fi. If connection is successful, the blue Wi-Fi LED light will be flashing.
- On your wireless computer or mobile devices such as smartphone or tablet, open your browser (i.e. 10 or above).
- Type the scanner's permanent IP (10.10.10.254) address on the URL bar (<http://10.10.10.254>).
- A login dialog box will be first displayed. Type the default user name and password – [admin] to login the scanner's embedded web page. (If desired, the default password can be changed later in the web page.)



- e. Choose [**WIFI**] to prompt the WIFI page.



- f. Choose your desired [**Network Name**] (SSID) and click [Connect]. Wait for 60 seconds for the connected status confirmation.
- g. After the Wi-Fi connection is successful, choose [**Status**] to check the [**WAN IP**] address is available from the selected network.

7.2.3 Connect to a wireless access point using the WPS button

You may connect the scanner to a WPS compatible wireless access point by pressing the WPS button on the back of the scanner.

Before You Begin!

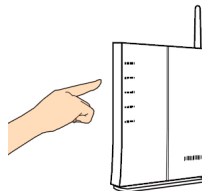
To enable the WPS connection of your access point, please refer to the user's guide of your access point.

Perform the following procedure to connect.

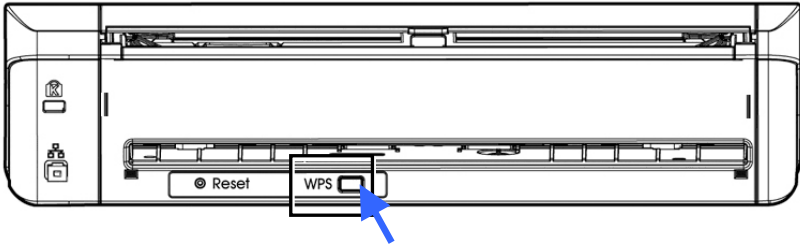
1. Confirm your wireless access point/router has the WPS or AOSS™ symbol as shown below.



2. Press the Wi-Fi button to turn on Wi-Fi. If the connection is successful, the blue Wi-Fi LED light will be flashing.
3. Press the WPS button of your wireless access point. (You may refer to the user's guide of your access point/router for instructions on how to use the WPS button.)



4. Press and hold the WPS button on the back of the scanner for about 5 seconds within 2 minutes after pressing the WPS button of your wireless access point.



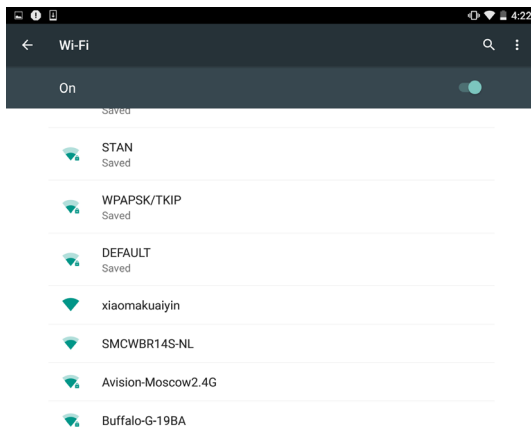
5. If the connection is successful, the Wi-Fi LED light of the scanner will be flashing. (Refer to the user's guide of your access point for the connection result.)


After the Wi-Fi connection is successful, the scanner will be in Wi-Fi client mode and your computer (under the same wireless access point/router) can search and connect the scanner by VSL (Virtual Scanner Link) application. If your computer can not find the scanner, please try the process again.

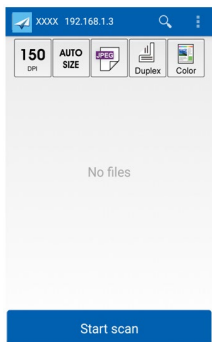
7.3 Scanning a document from a mobile device

Make sure that the **MB Application** (Scan App) has been installed on your mobile device. The **MB Application** can be purchased for free from an application store such as Google Play.

1. Enable [**Wi-Fi**] from [**Settings**] of your wireless computer, smartphone, or tablet and then choose the same network name (SSID) of your scanner.



2. Tap the **PaperAir** app () on the screen to launch the Scan Application. The main window will be displayed and the application will automatically search a scanner in the same wireless LAN. If successful, [**Start scan**] will be displayed at the bottom as shown below.



ATTENTION:

If the scanner is not found, please check the followings:

1. The scanner is not ready yet. Tap [**More Settings**] and then [**Search scanner**] to search the scanner again.
2. Check if the mobile device and the scanner are in the same wireless LAN.

-
3. Check if the default settings meet your requirements. If not, change the scan settings to fit your specific scanning task.

ITEM DESCRIPTION



Resolution: Select your desired resolution. The higher resolution, the greater the image quality and disk space.

Choice: *150, 200, 300 dpi



Scan Size: Select your paper size or you may choose Auto to let the scanner detect your document size automatically.

Choice: *Auto size, A4, LTR (Letter), LGL (Legal), 4x6, 5x7



File Format: Select the file format for your image.

Choice: *JPEG, PDF, TIFF

Note:

- The JPEG file does not support the B&W image.
- The TIFF file format supports only the B&W image.



Select to scan the front side (simplex) or both the front side and the rear side (duplex) of your document.

Choice: *Simplex, Duplex

Note: The duplex mode is available to scan from the auto document feeder only.



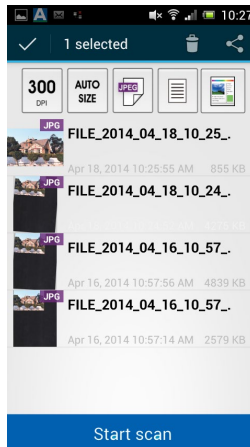
Color Mode: Select your desired image mode.

Choice: *Color, B&W, Gray

* Default settings

4. Load a page to the auto document or place a page on the flat bed.
5. Tap the [**Start scan**] button. (Choose your scanner if there is more than one scanner connected to the network). In a second, the scanner begins scanning the document and the thumbnail scanned image will be displayed.

The
Thumbnail
Image

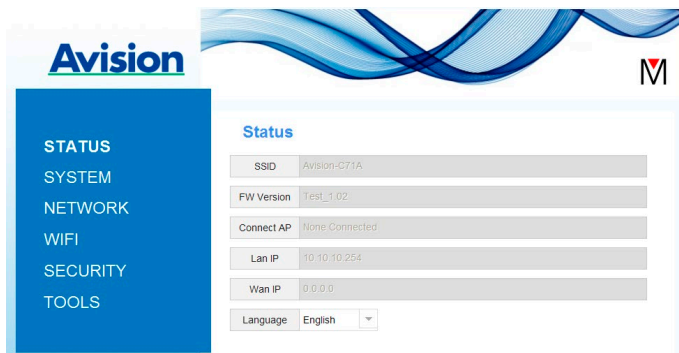


6. Tap the thumbnail image to view the entire image.

7.4 Use the Embedded Web Page

7.4.1 View the Embedded Web Page

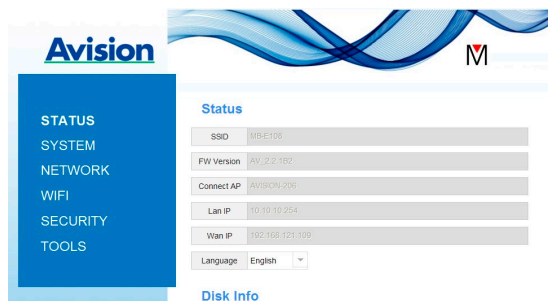
1. Press the Wi-Fi button on the scanner to turn on Wi-Fi. The blue Wi-Fi LED light will be flashing.
2. On your wireless computer, open your browser (i.e. 10 or above).
3. Type the scanner's permanent IP (10.10.10.254) address on the URL bar (<http://10.10.10.254>).
4. A login dialog box will be first displayed. Type the default user name and password – [admin] to login the scanner's embedded web page. (If desired, the default password can be changed later in the web page.)



7.4.2 The Status Page

The **[Status]** page includes the following information:

NAME	DESCRIPTION
SSID	Displays current network name for the scanner. You may change the name on the "Network" option.
FW Version	Displays current firmware version.
Connect AP	Displays connected Access Point (AP).
LAN IP	Displays IP address obtained from wired Ethernet network.
WAN IP	Displays Wireless IP address.
Language	Displays current language for the web page. Choice: English, Chinese



7.4.3 The System Page

The **[System]** page includes the following options:

NAME	DESCRIPTION
Factory Default	Restore the network security settings to factory default.
Reboot	Restart the scanner. The Net LED light turns off and then turns on.

To restore network security settings to factory default,

1. Press the **[Factory Default]** button. A **[Confirmation]** dialog box appears.
2. Press **[Yes]** to complete the settings.
3. The blue **[Wi-Fi LED]** light turns off.
4. Wait for about 30 seconds until the blue Network LED turns on and starts blinking again.

Alternatively,

You may press the **[Reset]** button on Scanner to restore network security settings to default.

1. Use your pen to press and hold the **[Reset]** button for about 5 seconds until the blue network LED turns off.
2. Wait for about 30 seconds until the blue Wi-Fi LED turns on and starts blinking again.

7.4.4 The Network Page

The [**Network**] page allows you to change the SSID name or login password if required.

NAME	DESCRIPTION
SSID	Displays current network name for the scanner. You may type your desired name on the SSID field and then click [Apply] to complete.
Device Name	Displays current device name for the scanner. You may type your desired name on the field and then click [Apply] to complete.
Timeout	Timeout for the connected network scanner: The allowable connection time after your last action. Range: 10 ~ 3,600 seconds. (Default is 0). If 0 second is set, this means no restriction on the connection time. If 300 seconds (5 minutes) is set, this means the network scanner will be disconnected 5 minutes after your last action.
Connect ion Type	Choice: DHCP (default), Static DHCP: Choose DHCP to obtain IP/subnet/gateway addresses automatically provided by the DHCP server. Static: Choose Static to assign your designated IP address. Type IP address on the following fields such as IP address, Subnet Mask, Gateway IP, Primary DNS, and Secondly DNS. DNS: Domain Name Server
Login	Displays current login user name for the web page. You may type your desired password on the password field and then click [Apply] to complete.

7.4.5 The WIFI Page

The [**WIFI**] page allows you to connect Scanner to a wireless network.

To connect Scanner to a wireless network,

1. Click [**WIFI**]. All the available wireless networks will be displayed.



2. Choose the network name (SSID) which you wish to connect to and then click the [**Connect**] button. (Wait for 60 seconds while the connection is processed.) If required, type your network password (or security key) and click [**OK**].
3. After successful connection, the selected Network Name (SSID) will be marked with [**connected**].
4. To disconnect the network, highlight it and click [**Disconnect**].

7.4.6 The Security Page

The [**Security**] page provides the following authentication mode (security protocol) Choice: Disable, WEP, WPA-PSK, WPA2-PSK.



Choice for the encryption protocols includes **TKIP**, **AES**.

AUTHENTICATION (SECURITY) METHOD

ENCRYPTION METHOD

Disable

None

WEP

WEP

Up to four WEP key can be set.
Type your WEP in the field and
then click [**Apply**] to complete.

WPA-PSK

Choice: **TKIP/AES**

Type your desired pass phrase in
the [**Pass Phrase**] field and then
click [**Apply**] to complete.

WPA2-PSK

Choice: **TKIP/AES**

(Pass Phrase: 12345678)
You may change your [Pass
Phrase] by entering the new pass
phrase in the field and then click
[**Apply**] to complete.

8. Maintenance

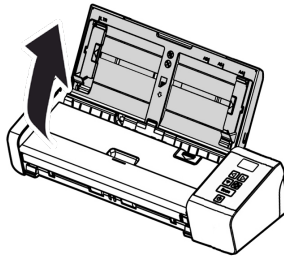
8.1 Clean the Scanner Glass, Separation Pad and Rollers

If the scanned images contain streaks or scanned documents become dirty, the scanning glass, separation pad and roller inside the scanner are likely to be dirty. Clean them periodically.

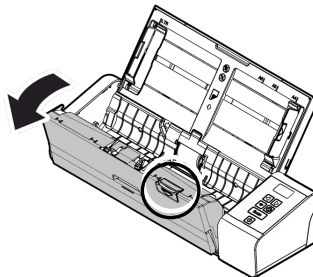
Use only the recommended or supplied tool to clean the scanner and feeder dock.

Cleaning steps:

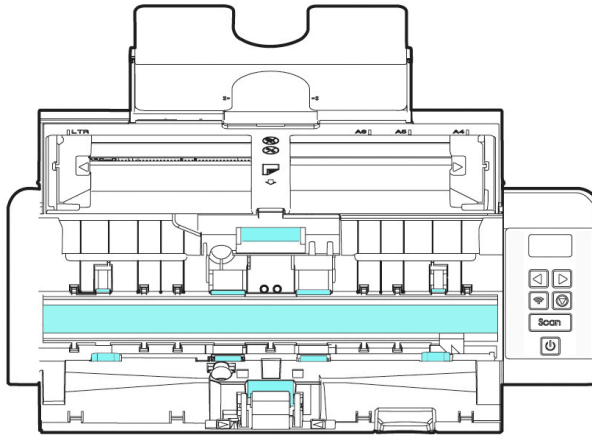
1. Open the feed tray.



2. Press the ADF Release button to open the feeder cover.



-
3. Wipe the separation pad, rollers and the glass with the cleaning cloth.



NOTE:



- Adding some isopropyl alcohol (95%) on the cleaning cloth is more efficient when cleaning the rollers.
- Do not use any solvents or corrosive liquid (*i.e.*, *alcohol*, *kerosene*, *etc.*) to clean any part of the scanner, otherwise the plastic material will be permanently damaged.

8.2 Replace the Feed Roller

The feed roller and separation pad inside the scanner wear with scanning. If the feed roller and separation pad are worn, documents may not feed correctly and paper jams may occur. When document feed performance deteriorates, replace the feed roller and separation pad.



NOTE:

It is recommended to replace the feed roller or separation pad when the total number of pages of documents fed in the scanner exceeds one of the following quantities:

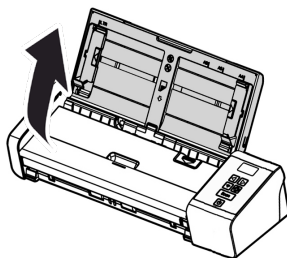
Feed Roller: 100,000 sheets

Separation Pad: 30,000 sheets

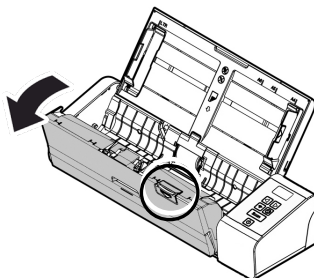
Follow these steps to replace the separation pad and feed roller.

To replace the Feed Roller,

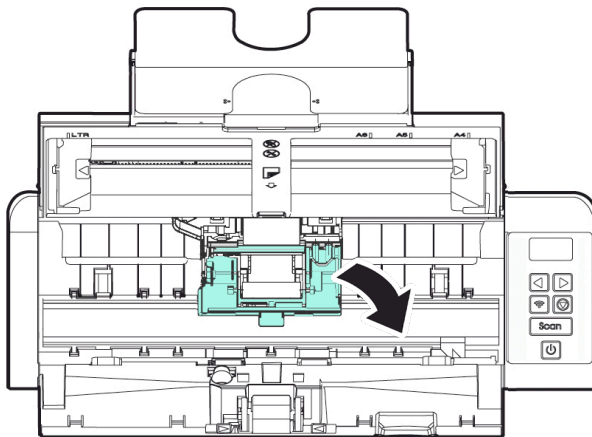
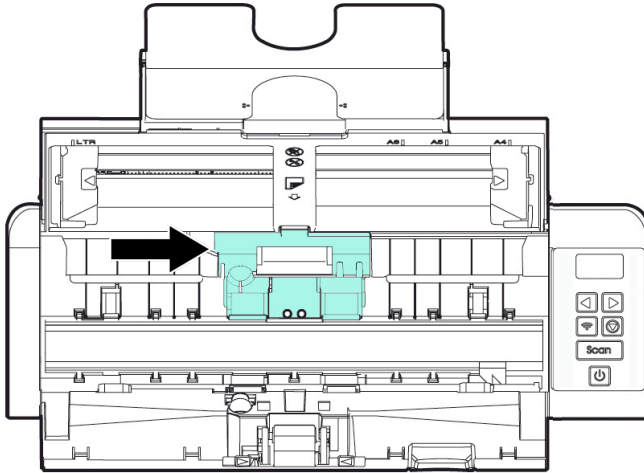
1. Open the feed tray.



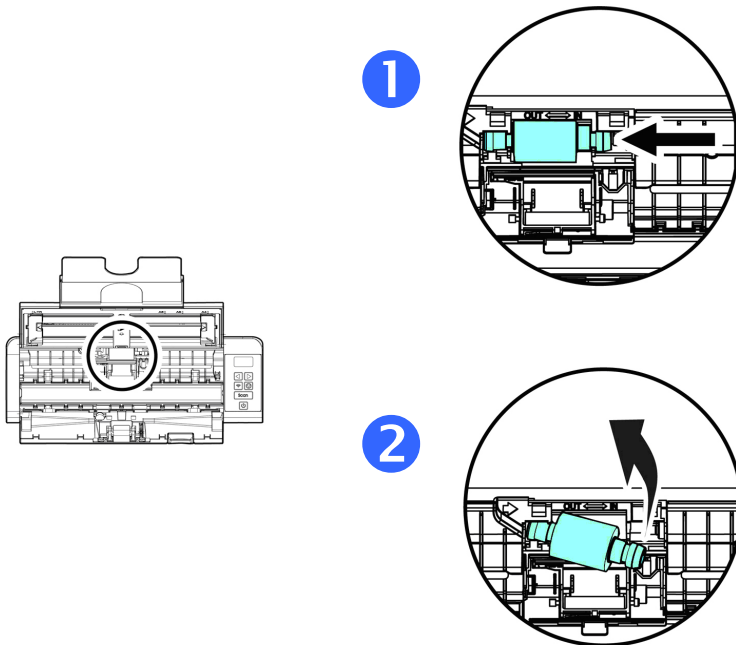
2. Press the ADF Release button to open the feeder cover.



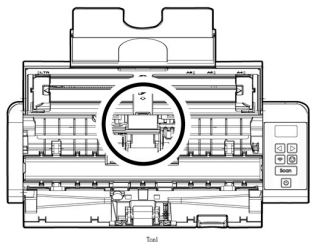
3. Open the roller cover.



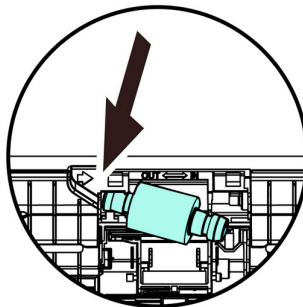
4. Slide the feed rollers to the left.
5. Remove the feed rollers.



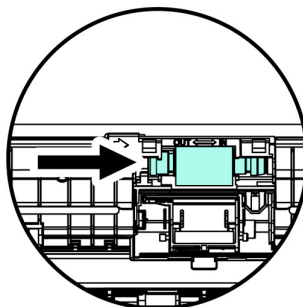
6. Attach the new feed rollers. Insert the left end of the shaft to the notch and slide the feed roller to the right. A snap-in sound could be heard.



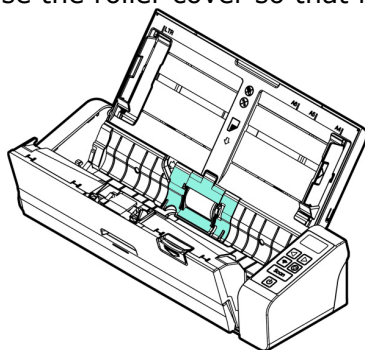
1



2



7. Completely close the roller cover so that it clicks into place.



8. Close the feeder cover.

NOTE:

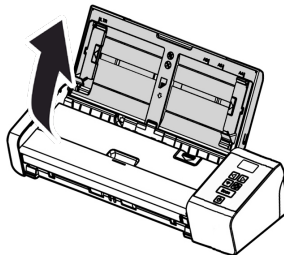


- Consumables must be replaced regularly. It is recommended to purchase new consumables in advance so that they can be replaced before the end of their life time.
- The replacement cycle is based on the use of A4 (80 g/m² [20 lb]) wood-free paper or plain paper. The actual cycle varies according to the type of used paper and how frequently the scanner is used and cleaned.
- Use only the specified consumables.
- To purchase consumables, contact the store where you purchased the scanner or an authorized scanner service provider.

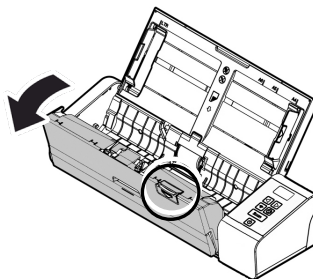
8.3 Replace the Separation Pad

To replace the Separation Pad,

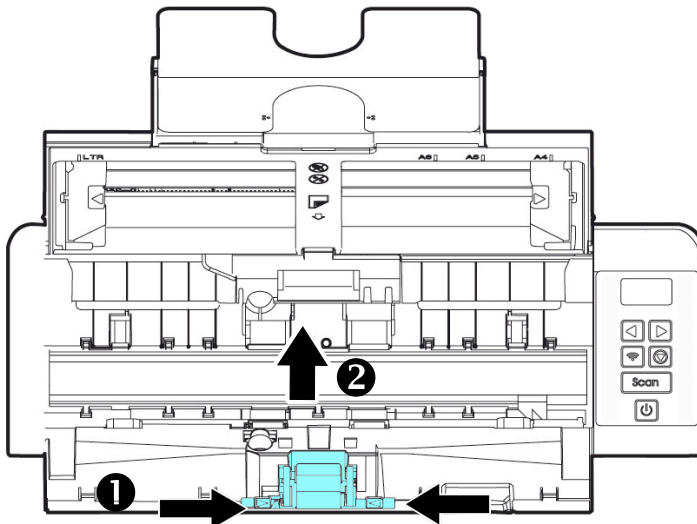
1. Open the feed tray.



2. Open the feeder cover.



-
3. Press two arms of the separation pad inwardly with two fingers (①) and lift it up (②) to remove the separation pad.



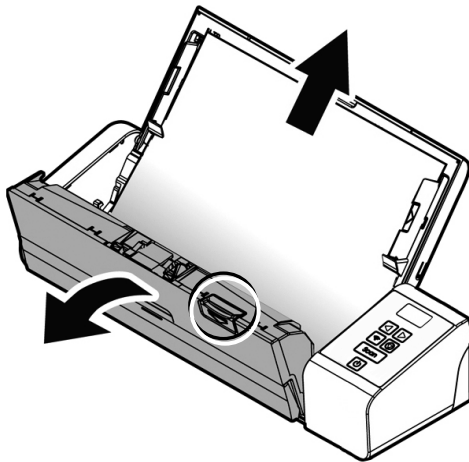
4. Hold two arms of the separation pad with two fingers and attach the new separation pad to the scanner.
6. Close the feeder cover.

9. Troubleshooting

9.1 Clear a paper jam



In the event of a paper jam, follow the procedures below to remove the paper:

1. Press the ADF Release button to open the feeder cover.
2. Carefully pull the paper out of the feed tray.
3. Close the feeder cover. Your Scanner is now ready to use.



9.2 Error Conditions

If there is error during scanning, the LED light will be flashing in red color and error drawing will be displayed. Refer to the following table to clear the error conditions.

ERROR DRAWING/MEANING	CAUSE	HOW TO RESTORE
Paper jam 	<ol style="list-style-type: none">1. Original has become stuck in the feeder.2. Original exceeds max. allowable length	Open the feeder cover and pull the original out of the feeder.
Cover opens 	Feeder cover opens.	Close the feeder cover.

9.3 Frequently asked questions and answers

Q : Paper becomes jammed or multi-fed.

- A :**
1. Flatten the corners and edges of your documents.
 2. Thoroughly fan your documents before loading them into the scanner. Document might stick together because of static electricity.
 3. Reduce the number of pages that you load into the scanner at one time.

Q : Paper becomes skewed in the scanner.

- A :**
1. Align the document guides to fit the documents as closely as possibly and place the documents so that they feed in straight.
 2. Check the condition of the feeding roller. If necessary, follow the cleaning directions in Section 5.1 and perform the cleaning.

Q: Why does my scanned image always come out too dark?

- A:**
1. Please adjust the screen settings to sRGB.
 2. Please adjust the brightness settings on the screen from application software.

Q: When I choose optical resolution to be 600 dpi, the "auto crop" and "deskew" functions will be disabled.

- A:** Since to perform auto crop and deskew consumes great deal of system memory, it is suggested if you wish to perform "auto crop" and "deskew" functions, please choose your optical resolution to be smaller than 600 dpi to prevent a error message.

9.4 Technical Service

Before contacting Avision, please prepare the following information by referring to Section 4.14, The Information Tab:

- Scanner serial & revision number (located on the bottom of the scanner);
- Hardware configuration (e.g., your host CPU type, RAM size, free disk space, display card, interface card);
- The name and version of your scanning software application;
- The version of your scanner driver.

Please call us at:

Headquarter

Avision Inc.

No. 20, Creation Road I, Science-Based Industrial Park,
Hsinchu 300, Taiwan, ROC

TEL: +886 (3) 578-2388

FAX: +886 (3) 577-7017

E-MAIL: service@avision.com.tw

Web Site: <http://www.avision.com.tw>

US and Canada Area

Avision Labs, Inc.

5694 Stewart Avenue, Fremont, CA 94538

E-mail: sales@avision-labs.com

E-mail : support@avision-labs.com

<http://www.avision-labs.com>

China Area

Shanghai Technical Support Center

Room 410, Heseng Business Center, No. 1600 Yan'an West Road,
Changning District, Shanghai

TEL :+86-21-62816680

FAX :+86-21-62818856

E-MAIL :sales@avision.net.cn

Web Site: <http://www.avision.com.cn>

Europe Area

Avision Europe GmbH

Siemensring 91

47877 Willich

Germany

Fax: +49 2154-88850-29

E-MAIL: support@avision.de

Web Site: <http://www.avision.de>

Espaço Brasil

Avision Brasil Ltda.

Rua Flórida, 1670 – CJ 122 – Cidade Monções, São Paulo-Brasil

Telefone: (11) 2737-6609

E-mail : suporte@avision.com.br

Web Site: <http://www.avision.com.br>

Basic Specifications:

Model Number :	FL-1912H
Power (Input):	100-240 VAC, 50/60 Hz
Power (Output):	24V, 1.5A
Operating Temperature:	10° C~35° C
Dimensions: (WxDxH) Min.	299 x 104 x 74 mm (11.77 x 4.09 x 2.91 in.)
Weight:	1.5 kg (3.3 lb.)